

CITY OF HILLSBORO
CITY COUNCIL MEETING

Agenda – Regular Meeting - Tuesday, September 21, 2021 at 4:00 p.m.

Zoom Link: <https://us02web.zoom.us/j/81383457941>

- A. Meeting Called to Order
- B. Approval of Minutes From 9-7-2021 Meeting
- C. Approval of Vouchers totaling \$419,348.98
- D. Public Comments
- E. Business
 - 1. Charter Ordinance 22
 - 2. KDOT Grant Application Submission
 - 3. CBK Inc. Agreement
 - 4. Brush Truck Bids
 - 5. Transformer Restock
 - 6. Voting Delegates for LKM
 - 7. ELCON Invoices Totaling \$752.31
- F. Board Appointments
- G. City Administrator's Report
- H. Council Comments
- I. Adjournment

Hillsboro, Kansas
September 7, 2021

1. The City Council met in regular session via Zoom and in person, on Tuesday, August 17, 2021 at 4:00pm with Mayor Lou Thurston and Council members Brent Driggers, Renee Gehring and Byron McCarty participating.

2. Others Participating: Kimberlyn Gilchrist, City Attorney; Madeline Reida, Marion County Record; Laura Paulus, Hillsboro Free Press; Greg Vahrenberg, Raymond James; Heather Goering, Accounts Payable & Payroll Clerk; Matt Stiles, City Administrator; and Danielle Bartel, City Clerk.

3. CALL TO ORDER: Mayor Lou Thurston called the meeting to order at 4:00pm.

4. MINUTES: Council member Gehring motioned to approve the minutes as presented and Council member McCarty seconded. Motion carried.

5. VOUCHERS: Council member McCarty motioned to approve vouchers in the amount of \$648,988.78; Council member Driggers seconded. Motion carried.

Administrator Stiles introduced Heather Goering, who started in August as the Accounts Payable and Payroll Clerk.

6. PUBLIC COMMENTS: None.

7. BUSINESS

REVENUE NEUTRAL RATE HEARING: Mayor Thurston opened the Revenue Neutral Rate (RNR) Hearing to the public. No public comments were shared. The Council did not have any comments. The RNR Hearing was closed.

Council member McCarty motioned to approve Resolution 2021-06 to exceed the Revenue Neutral Rate and authorize the Mayor to sign; Council member Driggers seconded. Motion approved 3-0.

2022 BUDGET HEARING: Mayor Thurston opened the 2022 Budget Hearing to the public. No public comments were shared. The 2022 Budget Hearing was closed.

Administrator Stiles noted a format change to the budget in order to accommodate state and county requirements. He also shared the Recreation Commission held an RNR Hearing and a Budget Hearing. Council member Driggers motioned to approve the 2022 Budget; Council member McCarty seconded. Motion approved 3-0.

BOND REFUNDING OPPORTUNITY: Greg Vahrenberg of Raymond James provided an explanation of the refunding opportunity that could provide a net savings of up to \$33,000. The bonds available to be refunded include 2007A, 2011A and 2011B. Vahrenberg recommended the Council pursue refunding by direct placement which would be at no cost and no risk to the City.

Motion by Council member McCarty to approve Resolution 2021-07 authorizing the underwriting and sale of refunding bonds, and authorize the Mayor to sign. Council member Driggers seconded. Motion approved 3-0.

CEREAL MALT BEVERAGE (CMB) LICENSE FOR PUEBLO VIEJO: Administrator Stiles reviewed the application received from Pueblo Viejo and recommended approval. Council member Gehring motioned to approve the CMB license as requested and Council member McCarty seconded. Motion carried.

RATIFICATION OF ORDINANCE 1330A: Administrator Stiles explained the clerical error. Council member Gehring motioned to approve the request to ratify Ordinance 1330 as Ordinance 1330A; Council member McCarty seconded the motion. Motion approved 3-0.

ORDINANCE 1333 PARALLEL GENERATION: Administrator Stiles provided an overview of the current policy for solar customers as approved in April 2020. He recommended replacing the current policy with this Parallel Generation Ordinance, as recommended by the State of Kansas and Kansas Power Pool. The City of Hillsboro currently has three solar customers. Council member McCarty motioned to approve Ordinance 1333 and authorize the Mayor to sign; Council member Driggers seconded. Motion approved 3-0.

ORDINANCE 1334 STANDARD TRAFFIC ORDINANCE: Administrator Stiles reviewed both Ordinance 1334 and 1335 and requested the Council adopt the revised versions of the Standard Traffic Ordinance (STO) and the Uniform Public Offense Code (UPOC). Council member Gehring motioned to approve Ordinance 1334 and authorize the Mayor to sign; seconded by Council member McCarty. Motion approved 3-0.

ORDINANCE 1335 UNIFORM PUBLIC OFFENSE CODE: Council member McCarty motioned to approve Ordinance 1335 and authorize the Mayor to sign; seconded by Council member Driggers. Motion approved 3-0.

PROCLAMATION FOR PUBLIC POWER WEEK: Administrator Stiles noted Public Power Week will be October 3-9, 2021. A food drive and other activities will take place during that week. Council member McCarty motioned to approve the Proclamation and authorize the Mayor to sign; Council member Driggers seconded. Motion approved.

WATER PRODUCTION PURCHASE: Administrator Stiles requested approval for the water production purchase in the amount of \$12,060. Motion by Council member Driggers to approve the purchase; seconded by Council member McCarty. Motion approved 3-0.

SEWER LAGOON PURCHASE: Administrator Stiles requested approval for a wire purchase for the lagoon project in the amount of \$10,180. Council member Driggers motioned to approve the purchase; Council member McCarty seconded. Motion carries 3-0.

PART TIME POLICE OFFICER WAGE INCREASE REQUEST: Administrator Stiles requested a wage increase for all part time police officers in order to retain quality reserve officers. The financial impact is expected to be \$3,200 annually. Council member McCarty motioned to approve a wage increase for part time police officers from \$15 per hour to \$18 per hour effective immediately; Council member Gehring seconded. Motion carried.

2022 POLICE PATROL VEHICLE: Administrator Stiles reviewed a bid received from Hillsboro Ford for a 2022 Interceptor Explorer for \$32,511 for the police department. Council member McCarty motioned to approve the order for a new patrol vehicle as requested; Council member Driggers seconded. Motion approved.

RECORDS RETENTION POLICY #92: The purpose of this policy is to provide guidelines for the City to follow regarding which documents to retain and for what period of time. Administrator Stiles noted these guidelines are in line with State law. Council member Driggers motioned to approve the Records Retention Policy; seconded by Council member Gehring. Motion approved unanimously.

SHUTOFF POLICY #93: Administrator Stiles reviewed recommended changes to the shutoff policy. If approved, delinquency notices will be mailed on or after the 16th and service termination notices will be delivered on the final Monday of each month. Customers will have 24 hours to pay the outstanding balance at City Hall. Services will be shut off on Tuesday afternoon if payment has not been made, and services will not be restored until 8am on Wednesday. Council member McCarty motioned to approve the Electrical Service Disconnection Policy as presented; Council member Gehring seconded. Motion carried.

HOUSING DEVELOPMENT POLICY #94: Administrator Stiles highlighted the need for new housing in the community and this policy would be an incentive for developers to build in the City of Hillsboro. Council member Driggers motioned to approve the Housing Development Policy; Council member McCarty seconded. Motion approved.

PROPOSAL FOR COMMUNITY ENGAGEMENT DIRECTOR POSITION: Administrator Stiles requested approval for a new full-time position as stated in the staff report. The Museum Advisory Board approved of this direction and he shared the board would like to see more regular hours at the museum. Council member McCarty motioned to approve the new Community Engagement Director position; Council member Driggers seconded. Motion approved.

ELCON INVOICES TOTALING \$17,184.85: Administrator Stiles reviewed the recent Elcon invoices. Council member McCarty motioned to approve payment of the invoices; Council member Driggers seconded. Council member Gehring abstained. Motion approved.

REAPPOINT BRAD JANTZ AS STANDARD HEARING OFFICER: Administrator Stiles requested the Council reappoint Brad Jantz as the City's Standard Hearing Officer and shared Brad also serves as the municipal judge. Council member McCarty motioned to approve this reappointment; Council member Driggers seconded. Motion carried.

The Council recessed into a Land Bank meeting at 5:15pm and resumed the Council meeting at 5:20pm.

8. BOARD APPOINTMENTS: Mayor Thurston highlighted two board appointments for consideration including Nikki Jones and Alvin Hett.

Council member McCarty motioned to appoint Nikki Jones to the Hillsboro Housing Authority; Council member Driggers seconded. Motion approved.

Council member Gehring motioned to appoint Alvin Hett to the Hillsboro Library Board; Council member McCarty seconded. Motion approved.

9. CITY ADMINISTRATOR'S REPORT: City Administrator Stiles reported on the following:

- Ken Carlson Accident
- 128 S Main Property
- Splash Park Delay
- Arts & Crafts Fair
- Fiber Project Update
- KPP Public Power Week
- Sales Tax

10. COUNCIL COMMENTS: Council member McCarty requested the Code Enforcement Officer review the status of vehicles in an alley. No additional Council comments.

11. ADJOURNMENT: Council meeting adjourned at 5:25pm.

ATTEST:

LOUIS THURSTON, MAYOR

DANIELLE BARTEL, CITY CLERK

BANK#	BANK NAME	CHECK#	DATE	ACCOUNT#	NAME	CHECK AMOUNT	CLEARED	MANUAL	VOID	REASON FOR VOID
4 CENTRAL NATIONAL BANK										
		32267	9/09/2021	1917	CENTRAL NATIONAL BANK	13,895.95				
		32268	9/09/2021	2369	KANSAS PAYMENT CENTER	289.85				
		32269	9/09/2021	3419	LINEBARGER GROGGAN BLAIR & SAM	292.09				
		32270	9/09/2021	3431	KS PAYMENT CENTER	980.69				
		32271	9/09/2021	1249	AMERICAN FUN FOOD CO., INC.	87.83				
		32272	9/09/2021	2547	ATMOS ENERGY	1,116.79				
		32273	9/09/2021	2866	CINTAS	24.55				
		32274	9/09/2021	1122	CITY OF HILLSBORO	8,328.39				
		32275	9/09/2021	2231	DALE'S SUPERMARKET	15.73				
		32276	9/09/2021	2748	EAGLE/VYVE BROADBAND	187.29				
		32277	9/09/2021	1124	FLINT HILLS ELECTRIC	2,827.63				
		32278	9/09/2021	1545	HILLSBORO HARDWARE	1,798.63				
		32279	9/09/2021	3059	INLAND TRUCK PARTS & SERVICE	48.60				
		32280	9/09/2021	1664	K S DEPT OF REVENUE	25.00				
		32281	9/09/2021	1226	MARION CO. TRANSFER STATION	1,638.36				
		32282	9/09/2021	3494	WORLD BLOCK	2,498.45				
*		32283								
		773	9/09/2021	2378	WEIS FIRE/SAFETY EQUIP, LLC	567.00			ACH	
*		6100161								
		6100162	9/09/2021	1144	K S WITHHOLDING TAX	2,415.86			E-PAY	
		6100163	9/09/2021	3432	KPERS	8,741.69			E-PAY	
		6100164	9/09/2021	3433	KPERS - LIBRARY	220.46			E-PAY	
		6100165	9/09/2021	3468	KPERS 457 PLAN	247.88			E-PAY	

* See Check Summary below for detail on gaps and checks from other modules.

BANK TOTALS:					
	OUTSTANDING		46,248.72		
	CLEARED		.00		

	BANK 4 TOTAL		46,248.72		
	VOIDED		.00		
FUND		TOTAL	OUTSTANDING	CLEARED	VOIDED
101	GENERAL	24,891.27	24,891.27	.00	.00
102	LIBRARY	648.35	648.35	.00	.00
105	INDUSTRIAL	1,025.02	1,025.02	.00	.00
106	AIRPORT REVOLVING	78.97	78.97	.00	.00
400	CIP	120.54	120.54	.00	.00
618	WATER	11,365.25	11,365.25	.00	.00
619	ELECTRIC	3,201.37	3,201.37	.00	.00
620	REFUSE	2,626.47	2,626.47	.00	.00
621	SEWER	2,291.48	2,291.48	.00	.00

MANUAL CHECKS (09/09/21) \$46,248.72

SCHEDULED CLAIMS LIST

INVOICE#	LINE	DUE DATE	INVOICE DATE	REFERENCE	PAYMENT AMOUNT	DIST	GL ACCOUNT	CK SQ
2021812-0	1	9/09/21	9/01/21	CENTRAL NATIONAL BANK 1249 AMERICAN FUN FOOD CO., INC. CONCESSIONS & LATE FEE	87.83	101	101-320-5351 POOL CONCESSIONS	1
				INVOICE TOTAL	87.83			
				VENDOR TOTAL	87.83			
090921	1	9/09/21	8/30/21	2547 ATMOS ENERGY UTILITIES	119.34	618	618-812-5280 WATER PRODUCTION UTILITIES	1
				UTILITIES	512.33	101	101-320-5280 POOL UTILITIES	1
				UTILITIES	52.61	101	101-310-5280 PARK UTILITIES	1
				UTILITIES	59.35	101	101-120-5280 ADMIN UTILITIES	1
				UTILITIES	153.13	101	101-350-5280 MUSEUM UTILITIES	1
				UTILITIES	19.78	101	101-410-5280 STREET UTILITIES	1
				UTILITIES	19.78	619	619-830-5280 ELEC DIST UTILITIES	1
				UTILITIES	19.79	620	620-850-5280 REFUSE DIST UTILITIES	1
				UTILITIES	107.41	400	400-610-6503 CIP-AMPI PROPERTY	1
				UTILITIES	53.27	101	101-210-5280 POLICE UTILITIES	1
					INVOICE TOTAL	1,116.79		
	VENDOR TOTAL	1,116.79						
5065236811	1	9/09/21	6/10/21	2866 CINTAS SERVICE FIRST AID CABINET	24.55	101	101-120-5301 ADMIN COMMODITIES	1
				INVOICE TOTAL	24.55			
				VENDOR TOTAL	24.55			
081621	1	9/09/21	8/16/21	1122 CITY OF HILLSBORO UTILITIES	2,205.31	101	101-320-5280 POOL UTILITIES	1
				UTILITIES	1,072.64	101	101-120-5280 ADMIN UTILITIES	1
				UTILITIES	356.79	101	101-350-5280 MUSEUM UTILITIES	1
				UTILITIES	2,201.07	618	618-812-5280 WATER PRODUCTION UTILITIES	1
				UTILITIES	251.26	101	101-310-5280 PARK UTILITIES	1
				UTILITIES	1,093.18	621	621-870-5280 SEWER DIST UTILITIES	1
				UTILITIES	541.13	619	619-830-5280	1

SUPPORTING DOCUMENTS FOR MANUAL CHECKS (09/09/21)

INVOICE#	LINE	DUE DATE	INVOICE DATE	REFERENCE	PAYMENT AMOUNT	DIST GL	ACCOUNT	CK SQ
	8			UTILITIES	392.44	101	ELEC DIST UTILITIES 101-210-5280	1
	9			UTILITIES	13.13	400	POLICE UTILITIES 400-610-6503	1
	10			UTILITIES	12.08	101	CIP-AMPI PROPERTY 101-340-5280	1
	11			UTILITIES	78.97	106	SPORTS COMPLEX UTILITIES 106-430-5280	1
	12			UTILITIES	110.39	101	AIRPORT REVOLVING UTILITIE 101-410-5280	1
							STREET UTILITIES	
				INVOICE TOTAL	8,328.39			
				VENDOR TOTAL	8,328.39			
090921	1	9/09/21	7/31/21	2231 DALE'S SUPERMARKET CONCESSIONS	15.73	101	101-340-5351 SPORTS COMPLEX CONCESSIONS	1
				INVOICE TOTAL	15.73			
				VENDOR TOTAL	15.73			
090921	1	9/09/21	9/02/21	2748 EAGLE/VYVE BROADBAND PHONE/INTERNET @ WTR PLANT	187.29	618	618-812-5280 WATER PRODUCTION UTILITIES	1
				INVOICE TOTAL	187.29			
				VENDOR TOTAL	187.29			
090921	1	9/09/21	9/01/21	1124 FLINT HILLS ELECTRIC UTILITIES	2,772.33	618	618-812-5280 WATER PRODUCTION UTILITIES	1
	2			UTILITIES	55.30	619	619-830-5280 ELEC DIST UTILITIES	1
				INVOICE TOTAL	2,827.63			
				VENDOR TOTAL	2,827.63			
090921	1	9/09/21	9/01/21	1545 HILLSBORO HARDWARE SUPPLIES	125.91	101	101-120-5301 ADMIN COMMODITIES	1
	2			SUPPLIES	94.56	101	101-510-5301	1
	3			SUPPLIES	168.04	619	BLDG INSP-COMMODITIES 619-830-5301	1
	4			SUPPLIES	160.53	101	ELEC DIST COMMODITIES 101-350-5301	1
	5			SUPPLIES	6.75	101	MUSEUM COMMODITIES 101-210-5301	1
	6			SUPPLIES	14.99	101	POLICE COMMODITIES 101-320-5301	1
	7			SUPPLIES	47.34	620	POOL COMMODITIES 620-850-5301	1
	8			SUPPLIES	54.94	621	REFUSE DISTB COMMODITIES 621-870-5301	1

SUPPORTING DOCUMENTS FOR MANUAL CHECKS (09/09/21)

INVOICE#	LINE	DUE DATE	INVOICE DATE	REFERENCE	PAYMENT AMOUNT	DIST GL	ACCOUNT	CK SQ
	9			SUPPLIES	138.86	101	SEWER DIST COMMODITIES 101-340-5301	1
	10			SUPPLIES	152.42	101	SPORTS COMPLEX COMMODITIES 101-410-5301	1
	11			SUPPLIES	146.91	618	STREET COMMODITIES 618-810-5301	1
	12			SUPPLIES	362.85	618	WTR DIST COMMODITIES 618-812-5301	1
	13			SUPPLIES	324.53	101	WATER PROD COMMODITIES 101-310-5301	1
							PARK COMMODITIES	
				INVOICE TOTAL	1,798.63			
				VENDOR TOTAL	1,798.63			
IN-0946785	1	9/09/21	8/19/21	3059 INLAND TRUCK PARTS & SERVICE HOSE	48.60	620	620-850-5215 REFUSE DIST VEHICLE MAINT	1
				INVOICE TOTAL	48.60			
				VENDOR TOTAL	48.60			
090921	1	9/09/21	9/09/21	1664 K S DEPT OF REVENUE AUGUST CMB REPORT	25.00	101	101-120-5246 ADMIN CEREAL MALT BEV STAM	1
				INVOICE TOTAL	25.00			
				VENDOR TOTAL	25.00			
090921	1	9/09/21	8/30/21	1226 MARION CO. TRANSFER STATION AUGUST RECYCLING	1,638.36	620	620-850-5267 REFUSE DIST RECYCLING EXPE	1
				INVOICE TOTAL	1,638.36			
				VENDOR TOTAL	1,638.36			
185230	1	9/09/21	9/03/21	2378 WEIS FIRE/SAFETY EQUIP, LLC NOZZLE ON 1976	567.00	101	101-220-5301 FIRE COMMODITIES	1
				INVOICE TOTAL	567.00			
				VENDOR TOTAL	567.00			
200042296	1	9/09/21	8/09/21	3494 WORLD BLOCK BLOCK FORM	2,498.45	101	101-410-5301 STREET COMMODITIES	1
				INVOICE TOTAL	2,498.45			
				VENDOR TOTAL	2,498.45			
				CENTRAL NATIONAL BANK TOTAL	19,164.25			

SUPPORTING DOCUMENTS FOR MANUAL CHECKS (09/09/21)

INVOICE#	LINE	DUE DATE	INVOICE DATE	REFERENCE	PAYMENT AMOUNT	DIST GL ACCOUNT	CK SQ
				TOTAL MANUAL CHECKS	.00		
				TOTAL E-PAYMENTS	.00		
				TOTAL PURCH CARDS	.00		
				TOTAL ACH PAYMENTS	567.00		
				TOTAL OPEN PAYMENTS	18,597.25		
				GRAND TOTALS	19,164.25		

NOTE:

**PAYROLL WITHHOLDINGS OF \$27,084.47
ARE NOT INCLUDED ON THE SCHEDULED
CLAIMS LIST.**

19,164.25
+27,084.47
46,248.72 = 09/09/2021 CHECK REGISTER

DB

SUPPORTING DOCUMENTS FOR MANUAL CHECKS (09/09/21)

BANK#	BANK NAME	CHECK#	DATE	ACCOUNT#	NAME	CHECK AMOUNT	CLEARED	MANUAL	VOID	REASON FOR VOID
4 CENTRAL NATIONAL BANK										
32283		9/14/2021	1917	CENTRAL NATIONAL BANK		376.06				
32284		9/14/2021	3480	FREEDOM CLAIMS MANAGEMENT INC		10,082.55				
32285		9/14/2021	2714	VERIZON WIRELESS		339.44				

* See Check Summary below for detail on gaps and checks from other modules.

BANK TOTALS:	
OUTSTANDING	10,798.05
CLEARED	.00

BANK 4 TOTAL	10,798.05
 VOIDED	 .00

FUND	TOTAL	OUTSTANDING	CLEARED	VOIDED
101 GENERAL	7,758.54	7,758.54	.00	.00
105 INDUSTRIAL	445.14	445.14	.00	.00
618 WATER	916.09	916.09	.00	.00
619 ELECTRIC	1,008.92	1,008.92	.00	.00
620 REFUSE	445.14	445.14	.00	.00
621 SEWER	224.22	224.22	.00	.00

MANUAL CHECKS (09/14/21) \$10,798.05

SCHEDULED CLAIMS LIST

INVOICE#	LINE	DUE DATE	INVOICE DATE	REFERENCE	PAYMENT AMOUNT	DIST	GL ACCOUNT	CK SQ
091321	1	9/14/21	9/13/21	CENTRAL NATIONAL BANK 1917 CENTRAL NATIONAL BANK REPLENISH PETTY CASH	66.06	101	101-220-5301 FIRE COMMODITIES	1
	2			REPLENISH PETTY CASH	10.00	101	101-310-5301 PARK COMMODITIES	1
	3			REPLENISH PETTY CASH	30.00	101	101-210-5301 POLICE COMMODITIES	1
	4			REPLENISH PETTY CASH	23.99	101	101-320-5351 POOL CONCESSIONS	1
	5			REPLENISH PETTY CASH	4.87	619	619-830-5301 ELEC DIST COMMODITIES	1
	6			REPLENISH PETTY CASH	166.71	618	618-810-5301 WTR DIST COMMODITIES	1
	7			REPLENISH PETTY CASH	10.00	101	101-120-5301 ADMIN COMMODITIES	1
	8			REPLENISH PETTY CASH	64.43	101	101-410-5301 STREET COMMODITIES	1
				INVOICE TOTAL	376.06			
			VENDOR TOTAL	376.06				
091421	1	9/14/21	9/07/21	3480 FREEDOM CLAIMS MANAGEMENT INC ADMIN HEALTH INSURANCE	1,559.67	101-2289	101-050-2289 HEALTH PAYABLE	1
	2			ELECTRIC HEALTH INSURANCE	1,004.05	619-2289	619-050-2289 HEALTH PAYABLE	1
	3			GOLF HEALTH INSURANCE	890.28	101-2289	101-050-2289 HEALTH PAYABLE	1
	4			INDUSTRIAL HEALTH INSURANCE	445.14	105-2289	105-050-2289 HEALTH PAYABLE	1
	5			POLICE HEALTH INSURANCE	2,336.22	101-2289	101-050-2289 HEALTH PAYABLE	1
	6			REFUSE HEALTH INSURANCE	445.14	620-2289	620-050-2289 HEALTH PAYABLE	1
	7			SEWER HEALTH INSURANCE	224.22	621-2289	621-050-2289 HEALTH PAYABLE	1
	8			STREET HEALTH INSURANCE	2,060.03	101-2289	101-050-2289 HEALTH PAYABLE	1
	9			WATER PROD HEALTH INSURANCE	669.36	618-2289	618-050-2289 HEALTH PAYABLE	1
	10			SP COMPLEX HEALTH INSURANCE	224.22	101-2289	101-050-2289 HEALTH PAYABLE	1
	11			BLDG INSP HEALTH INSURANCE	224.22	101-2289	101-050-2289 HEALTH PAYABLE	1
			INVOICE TOTAL	10,082.55				
			VENDOR TOTAL	10,082.55				
9887286944	1	9/14/21	8/28/21	2714 VERIZON WIRELESS CELL PHONE SERVICE iPAD DATA PLANS	40.01	101	101-120-5280 ADMIN UTILITIES	1
	2			CELL PHONE SERVICE iPAD DATA PLANS	40.01	101	101-110-5280 LEGISLATIVE UTILITIES	1

SUPPORTING DOCUMENTS FOR MANUAL CHECKS (09/14/21)

INVOICE#	LINE	DUE DATE	INVOICE DATE	REFERENCE	PAYMENT AMOUNT	DIST GL	ACCOUNT	CK SQ
	3			CELL PHONE SERVICE iPAD DATA PLANS	40.01	618	618-812-5280 WATER PRODUCTION UTILITIES	1
				INVOICE TOTAL	120.03			
9887553210	1	9/14/21	9/02/21	CELL PHONE SERVICE iPAD DATA PLANS	49.69	101	101-210-5280 POLICE UTILITIES	1
	2			CELL PHONE SERVICE iPAD DATA PLANS	49.69	101	101-220-5280 FIRE UTILITIES	1
	3			CELL PHONE SERVICE iPAD DATA PLANS	40.01	101	101-120-5280 ADMIN UTILITIES	1
	4			CELL PHONE SERVICE iPAD DATA PLANS	40.01	101	101-110-5280 LEGISLATIVE UTILITIES	1
	5			CELL PHONE SERVICE iPAD DATA PLANS	40.01	618	618-812-5280 WATER PRODUCTION UTILITIES	1
				INVOICE TOTAL	219.41			
				VENDOR TOTAL	339.44			
				CENTRAL NATIONAL BANK TOTAL	10,798.05			
				TOTAL MANUAL CHECKS	.00			
				TOTAL E-PAYMENTS	.00			
				TOTAL PURCH CARDS	.00			
				TOTAL ACH PAYMENTS	.00			
				TOTAL OPEN PAYMENTS	10,798.05			
				GRAND TOTALS	10,798.05			

SUPPORTING DOCUMENTS FOR MANUAL CHECKS (09/14/21)

BANK#	BANK NAME	CHECK#	DATE	ACCOUNT#	NAME	CHECK AMOUNT	CLEARED	MANUAL	VOID	REASON FOR VOID
4 CENTRAL NATIONAL BANK										
		32287	9/22/2021	2981	ABILENE MACHINE, INC.	180.00				
		32288	9/22/2021	3331	IGNACIO ACEVEDO	123.76				
		32289	9/22/2021	1599	ADVANCE INSURANCE COMPANY	291.90				
		32290	9/22/2021	1629	AG POWER	693.51				
		32291	9/22/2021	1377	AG SERVICE	41.87				
		32292	9/22/2021	3251	AMERICAN ELECTRIC - EMPORIA	10,430.37				
		32293	9/22/2021	2766	GARY ANDREWS	76.42				
		32294	9/22/2021	2358	APAC-KANSAS, INC.	6,814.20				
		32295	9/22/2021	3497	ATOMIC SPORTS	889.30				
		32296	9/22/2021	1012	BAKER BROTHERS PRINTING, INC.	693.80				
		32297	9/22/2021	3107	BARDAVON HEALTH INNOVATIONS	330.00				
		32298	9/22/2021	2966	BROOKENS AND ROBSON LAW OFFICE	900.00				
		32299	9/22/2021	1413	BUILDER'S CONCRETE	596.50				
		32300	9/22/2021	3268	THE BUILDING CENTER	139.79				
		32301	9/22/2021	3404	CARDMEMBER SERVICE	2,549.87				
		32302	9/22/2021	2715	CENTURYLINK	3,171.56				
		32303	9/22/2021	3071	CHENEY DOOR COMPANY, INC	1,097.50				
		32304	9/22/2021	3161	CINTAS CORPORATION #451	145.70				
		32305	9/22/2021	3257	COMPLIANCE ONE	62.50				
		32306	9/22/2021	1030	COOP GRAIN & SUPPLY	5,504.97				
		32307	9/22/2021	2515	EBH & ASSOCIATES, P.A.	5,273.73				
		32308	9/22/2021	2154	EMC INSURANCE COMPANIES	500.00				
		32309	9/22/2021	3498	ENVIROCO, INC	31,950.00				
		32310	9/22/2021	2964	EPP'S SERVICE, INC.	16.48				
		32311	9/22/2021	3023	FAMILY HEALTH AMERICA, L.C.	139.87				
		32312	9/22/2021	1965	HASSMAN TERMITE, INC.	176.00				
		32313	9/22/2021	1184	HILLSBORO DEVELOPMENT CORP	100.00				
		32314	9/22/2021	2670	IMA, INC.	11,592.00				
		32315	9/22/2021	3496	JAMES CARR CONSTRUCTION	161.60				
		32316	9/22/2021	1475	OFFICE PLUS OF KANSAS	141.10				
		32317	9/22/2021	3129	PACE ANALYTICAL SERVICES, INC.	304.90				
		32318	9/22/2021	3422	PLENERT MOWING	1,800.00				
		32319	9/22/2021	2601	RAY LINDSEY COMPANY	603.58				
		32320	9/22/2021	2272	SCHWAN'S HOME SERVICE	128.65				
		32321	9/22/2021	1564	BEN STEKETEE	29.85				
		32322	9/22/2021	3227	TOUCHTONE COMMUNICATIONS	33.22				
		32323	9/22/2021	1939	U S A BLUEBOOK	1,129.40				
*		773								
		774	9/22/2021	3246	CORE & MAIN LP	1,621.55				ACH
		775	9/22/2021	1044	FOLEY INDUSTRIES	2,180.70				ACH
		776	9/22/2021	1565	HILLSBORO CONVENTION & TOURISM	1,000.00				ACH
		777	9/22/2021	1080	K M U	400.00				ACH
		778	9/22/2021	1449	K S ONE-CALL SYSTEM, INC	109.20				ACH
		779	9/22/2021	1216	KANSAS POWER POOL	264,724.10				ACH
		780	9/22/2021	1225	K S PUBLISHING VENTURES, LLC	32.25				ACH
		781	9/22/2021	3416	MUNICOM, LLC	1,100.00				ACH
		782	9/22/2021	2268	ROD'S TIRE & SERVICE, INC.	1,881.92				ACH
		783	9/22/2021	1110	STANION WHOLESALE ELECTRIC 107	438.59				ACH

COUNCIL CHECKS (09/21/21) \$362,302.21

BANK#	BANK NAME	ACCOUNT#	NAME	CHECK AMOUNT	CLEARED	MANUAL	VOID	REASON FOR VOID
-------	-----------	----------	------	--------------	---------	--------	------	-----------------

* See Check Summary below for detail on gaps and checks from other modules.

BANK TOTALS:	
OUTSTANDING	362,302.21
CLEARED	.00

BANK 4 TOTAL	362,302.21
 VOIDED	 .00

FUND	TOTAL	OUTSTANDING	CLEARED	VOIDED
101 GENERAL	24,182.97	24,182.97	.00	.00
105 INDUSTRIAL	10.70	10.70	.00	.00
106 AIRPORT REVOLVING	72.39	72.39	.00	.00
618 WATER	9,181.58	9,181.58	.00	.00
619 ELECTRIC	270,577.20	270,577.20	.00	.00
620 REFUSE	4,051.10	4,051.10	.00	.00
621 SEWER	54,226.27	54,226.27	.00	.00

COUNCIL CHECKS (09/21/21) \$362,302.21

INVOICE#	LINE	DUE DATE	INVOICE DATE	REFERENCE	PAYMENT AMOUNT	DIST	GL ACCOUNT	CK SQ
637861	1	9/22/21	9/03/21	CENTRAL NATIONAL BANK 2981 ABILENE MACHINE, INC. JOHN DEERE 6400 REAR GLASS	180.00	101	101-310-5210 PARK EQUIPMENT MAINTENANCE	1
				INVOICE TOTAL	180.00			
				VENDOR TOTAL	180.00			
082621	1	9/22/21	8/26/21	3331 IGNACIO ACEVEDO REIMB MILEAGE SCAFFA TRAINING	123.76	101	101-220-5301 FIRE COMMODITIES	1
				INVOICE TOTAL	123.76			
				VENDOR TOTAL	123.76			
21250000359	1	9/22/21	9/07/21	1599 ADVANCE INSURANCE COMPANY LIFE INSURANCE	7.20	621	621-870-5102	1
	2			LIFE INSURANCE	21.40	101	SEWER DISTB EMPLOYEE BENEF 101-330-5102	1
	3			LIFE INSURANCE	17.90	620	GOLF EMPLOYEE BENEFITS 620-850-5102	1
	4			LIFE INSURANCE	42.80	101	REFUSE DISTB EMPLOYEE BENE 101-410-5102	1
	5			LIFE INSURANCE	32.10	619	STREET EMPLOYEE BENEFITS 619-830-5102	1
	6			LIFE INSURANCE	53.50	101	ELEC DISTB EMPLOYEE BENEFI 101-210-5102	1
	7			LIFE INSURANCE	63.50	101	POLICE EMPLOYEE BENEFITS 101-120-5102	1
	8			LIFE INSURANCE	10.70	618	ADMIN EMPLOYEE BENEFITS 618-812-5102	1
	9			LIFE INSURANCE	10.70	618	WATER PROD EMPLOYEE BENEFI 618-810-5102	1
	10			LIFE INSURANCE	10.70	105	WTR DISTB EMPLOYEE BENEFIT 105-520-5102	1
	11			LIFE INSURANCE	10.70	101	INDUSTRIAL EMPLOYEE BENEFI 101-340-5102	1
	12			LIFE INSURANCE	10.70	101	SPORTS COMPLEX EMP BENEFIT 101-510-5102	1
				INVOICE TOTAL	291.90		BLDG INSP-EMPLOYEE BENEFIT	
				VENDOR TOTAL	291.90			
091521	1	9/22/21	8/31/21	1629 AG POWER AUGUST SUPPLIES	52.06	619	619-830-5301	1
	2			AUGUST SUPPLIES	8.59	621	ELEC DIST COMMODITIES 621-870-5301	1
	3			AUGUST OIL	18.99	621	SEWER DIST COMMODITIES 621-870-5305	1
	4			AUGUST SUPPLIES	21.64	101	SEWER DIST GAS & OIL 101-340-5301	1
	5			AUGUST SUPPLIES	162.17	101	SPORTS COMPLEX COMMODITIES 101-410-5301	1

SUPPORTING DOCUMENTS FOR COUNCIL CHECKS (09/21/21)

INVOICE#	LINE	DUE DATE	INVOICE DATE	REFERENCE	PAYMENT AMOUNT	DIST	GL ACCOUNT	CK SQ
	6			AUGUST OIL	29.38	101	STREET COMMODITIES 101-410-5305	1
	7			AUGUST PARTS	224.66	101	STREET GAS & OIL 101-410-5215	1
	8			AUGUST SUPPLIES	13.08	618	STREET VEHICLE MAINTENANCE 618-810-5301	1
	9			AUGUST SUPPLIES	162.94	618	WTR DIST COMMODITIES 618-812-5301	1
				INVOICE TOTAL	693.51		WATER PROD COMMODITIES	
				VENDOR TOTAL	693.51			
208265	1	9/22/21	9/15/21	1377 AG SERVICE FIX CARBON FEEDER	41.87	618	618-812-5301 WATER PROD COMMODITIES	1
				INVOICE TOTAL	41.87			
				VENDOR TOTAL	41.87			
1996-1010706	1	9/22/21	9/08/21	3251 AMERICAN ELECTRIC - EMPORIA PARK ELECT. BOX	37.43	101	101-310-5301 PARK COMMODITIES	1
				INVOICE TOTAL	37.43			
1996-1010951	1	9/22/21	9/08/21	WIRE FOR LAGOON	10,274.95	621	621-870-5501 SEWER DIST CAPITAL OUTLAY	1
				INVOICE TOTAL	10,274.95			
1996-1011506	1	9/22/21	9/08/21	WIRE FOR LAGOON	117.99	621	621-870-5501 SEWER DIST CAPITAL OUTLAY	1
				INVOICE TOTAL	117.99			
				VENDOR TOTAL	10,430.37			
091621	1	9/22/21	9/16/21	2766 GARY ANDREWS REIMB TERMINATING HEALTH INS	56.92	101-2289	101-050-2289 HEALTH PAYABLE	1
	2			REIMB TERMINATING DENTAL INS	19.50	101-2287	101-050-2287 DENTAL PAYABLE	1
				INVOICE TOTAL	76.42			
				VENDOR TOTAL	76.42			
8001849052	1	9/22/21	9/01/21	2358 APAC-KANSAS, INC. HOT MIX	1,425.08	101	101-410-5311 STREET-STREET REPAIR	1
				INVOICE TOTAL	1,425.08			
8001849205	1	9/22/21	9/07/21	HOT MIX	788.08	101	101-410-5311 STREET-STREET REPAIR	1
				INVOICE TOTAL	788.08			
8001849274	1	9/22/21	9/08/21	HOT MIX	2,200.37	101	101-410-5311	1

SUPPORTING DOCUMENTS FOR COUNCIL CHECKS (09/21/21)

INVOICE#	LINE	DUE DATE	INVOICE DATE	REFERENCE	PAYMENT AMOUNT	DIST	GL ACCOUNT	CK SQ
							STREET-STREET REPAIR	
				INVOICE TOTAL	2,200.37			
8001849327	1	9/22/21	9/09/21	HOT MIX	788.08	618	618-812-5301	1
	2			HOT MIX	791.77	101	WATER PROD COMMODITIES 101-410-5311	1
				INVOICE TOTAL	1,579.85		STREET-STREET REPAIR	
8001849386	1	9/22/21	9/10/21	HOT MIX	820.82	101	101-410-5311	1
				INVOICE TOTAL	820.82		STREET-STREET REPAIR	
				VENDOR TOTAL	6,814.20			
				3497 ATOMIC SPORTS				
13914	1	9/22/21	8/25/21	SHIRTS	340.70	618	618-810-5301	1
	2			SHIRTS	268.20	101	WTR DIST COMMODITIES 101-410-5301	1
	3			SHIRTS	118.50	619	STREET COMMODITIES 619-830-5230	1
	4			SHIRTS	60.90	101	ELEC-UNIFORM ALLOWANCE 101-340-5301	1
	5			SHIRTS	60.50	620	SPORTS COMPLEX COMMODITIES 620-850-5301	1
	6			SHIRTS	40.50	101	REFUSE DISTB COMMODITIES 101-330-5301	1
				INVOICE TOTAL	889.30		GOLF-COMMODITIES	
				VENDOR TOTAL	889.30			
				1012 BAKER BROTHERS PRINTING, INC.				
091321	1	9/22/21	9/13/21	CARDS, JULY/AUGUST STATEMENTS	581.30	101	101-120-5301	1
	2			WEBSITE UPDATES	112.50	101	ADMIN COMMODITIES 101-110-5201	1
				INVOICE TOTAL	693.80		LEGISLATIVE CONTRACTUAL SE	
				VENDOR TOTAL	693.80			
				3107 BARDAVON HEALTH INNOVATIONS				
INV-0000364	1	9/22/21	8/31/21	EMPLOYMENT TEST & DRUG SCREEN	110.00	101	101-120-5301	1
	2			EMPLOYMENT TEST & DRUG SCREEN	220.00	618	ADMIN COMMODITIES 618-810-5301	1
				INVOICE TOTAL	330.00		WTR DIST COMMODITIES	
				VENDOR TOTAL	330.00			
				2966 BROOKENS AND ROBSON LAW OFFICE				
083121	1	9/22/21	8/31/21	JUNE-AUGUST LEGAL SERVICES	900.00	101	101-210-5201	1
				INVOICE TOTAL	900.00		POLICE CONTRACTUAL SERVICE	

SUPPORTING DOCUMENTS FOR COUNCIL CHECKS (09/21/21)

INVOICE#	LINE	DUE DATE	INVOICE DATE	REFERENCE	PAYMENT AMOUNT	DIST	GL ACCOUNT	CK SQ
				VENDOR TOTAL	900.00			
65436	1	9/22/21	8/31/21	1413 BUILDER'S CONCRETE LAGOON CONCRETE	596.50	621	621-870-5501 SEWER DIST CAPITAL OUTLAY	1
				INVOICE TOTAL	596.50			
				VENDOR TOTAL	596.50			
091521	1	9/22/21	8/31/21	3268 THE BUILDING CENTER LAGOON PROJECT	139.79	621	621-870-5501 SEWER DIST CAPITAL OUTLAY	1
				INVOICE TOTAL	139.79			
				VENDOR TOTAL	139.79			
0915211	1	9/22/21	9/01/21	3404 CARDMEMBER SERVICE WEB HOSTING	39.00	101	101-110-5301 LEGISLATIVE COMMODITIES	1
	2			BALOONS	7.58	621	621-870-5301 SEWER DIST COMMODITIES	1
				INVOICE TOTAL	46.58			
0915212	1	9/22/21	9/01/21	CONFERENCE & CERTIFICATION	342.00	101	101-510-5301 BLDG INSP-COMMODITIES	1
	2			WINDOW SHADES	195.28	101	101-350-5301 MUSEUM COMMODITIES	1
	3			LABELS	43.37	101	101-120-5301 ADMIN COMMODITIES	1
				INVOICE TOTAL	580.65			
0915213	1	9/22/21	9/01/21	HATS, SHIRTS, PANTS	231.56	101	101-210-5230 POLICE UNIFORM ALLOWANCE	1
	2			CERTIFICATIONS, KIT, LABELS	496.12	101	101-210-5301 POLICE COMMODITIES	1
	3			PRELIMINARY BREATH TESTERS	185.67	101	101-210-5210 POLICE EQUIP MAINTENANCE	1
				INVOICE TOTAL	913.35			
0915214	1	9/22/21	9/01/21	SUPPLIES	190.60	101	101-410-5301 STREET COMMODITIES	1
	2			SUPPLIES	415.65	618	618-810-5301 WTR DIST COMMODITIES	1
	3			SUPPLIES	146.81	618	618-812-5301 WATER PROD COMMODITIES	1
	4			CHLORINE FEED SYSTEM PARTS	256.23	618	618-812-5210 WATER PROD EQUIPMENT MAINT	1
				INVOICE TOTAL	1,009.29			
				VENDOR TOTAL	2,549.87			
091521	1	9/22/21	9/07/21	2715 CENTURYLINK LOCAL PHONE SERVICE	88.27	101	101-120-5280 ADMIN UTILITIES	1

SUPPORTING DOCUMENTS FOR COUNCIL CHECKS (09/21/21)

INVOICE#	LINE	DUE DATE	INVOICE DATE	REFERENCE	PAYMENT AMOUNT	DIST	GL ACCOUNT	CK SQ
	2			LOCAL PHONE SERVICE	390.70	621	621-870-5280	1
	3			LOCAL PHONE SERVICE	487.35	101	SEWER DIST UTILITIES 101-210-5280	1
	4			LOCAL PHONE SERVICE	166.09	101	POLICE UTILITIES 101-350-5280	1
	5			LOCAL PHONE SERVICE	72.39	106	MUSEUM UTILITIES 106-430-5280	1
	6			LOCAL PHONE SERVICE	1,496.43	619	AIRPORT REVOLVING UTILITIE 619-830-5280	1
	7			LOCAL PHONE SERVICE	72.46	101	ELEC DIST UTILITIES 101-220-5280	1
	8			LOCAL PHONE SERVICE	75.62	101	FIRE UTILITIES 101-410-5280	1
	9			LOCAL PHONE SERVICE	46.23	101	STREET UTILITIES 101-320-5280	1
	10			LOCAL PHONE SERVICE	92.46	101	POOL UTILITIES 101-310-5280	1
	11			LOCAL PHONE SERVICE	183.56	101	PARK UTILITIES 101-340-5280	1
							SPORTS COMPLEX UTILITIES	
				INVOICE TOTAL	3,171.56			
				VENDOR TOTAL	3,171.56			
0407031-IN	1	9/22/21	8/24/21	3071 CHENEY DOOR COMPANY, INC DOOR AT WATER PLANT	1,097.50	618	618-812-5301 WATER PROD COMMODITIES	1
				INVOICE TOTAL	1,097.50			
				VENDOR TOTAL	1,097.50			
4095313587	1	9/22/21	9/09/21	3161 CINTAS CORPORATION #451 UNIFORMS	72.85	619	619-830-5230 ELEC-UNIFORM ALLOWANCE	1
				INVOICE TOTAL	72.85			
4095914448	1	9/22/21	9/15/21	UNIFORMS	72.85	619	619-830-5230 ELEC-UNIFORM ALLOWANCE	1
				INVOICE TOTAL	72.85			
				VENDOR TOTAL	145.70			
284169	1	9/22/21	9/10/21	3257 COMPLIANCE ONE EMPLOYEE ASSISTANCE PROGRAM	10.42	101	101-210-5301 POLICE COMMODITIES	1
	2			EMPLOYEE ASSISTANCE PROGRAM	10.42	618	618-812-5301 WATER PROD COMMODITIES	1
	3			EMPLOYEE ASSISTANCE PROGRAM	10.42	619	619-830-5301 ELEC DIST COMMODITIES	1
	4			EMPLOYEE ASSISTANCE PROGRAM	10.41	101	101-410-5301 STREET COMMODITIES	1
	5			EMPLOYEE ASSISTANCE PROGRAM	10.42	621	621-870-5301 SEWER DIST COMMODITIES	1
	6			EMPLOYEE ASSISTANCE PROGRAM	10.41	620	620-850-5301	1

SUPPORTING DOCUMENTS FOR COUNCIL CHECKS (09/21/21)

SCHEDULED CLAIMS LIST

INVOICE#	LINE	DUE DATE	INVOICE DATE	REFERENCE	PAYMENT AMOUNT	DIST	GL ACCOUNT	CK SQ
							REFUSE DISTB COMMODITIES	
				INVOICE TOTAL	62.50			
				VENDOR TOTAL	62.50			
				1030 COOP GRAIN & SUPPLY				
091521	1	9/22/21	8/31/21	GAS	658.30	101	101-210-5305	1
	2			DIESEL	904.61	101	POLICE GAS & OIL 101-410-5326	1
	3			GAS	449.04	101	STREET DIESEL & PROPANE 101-410-5305	1
	4			DIESEL	1,494.85	620	STREET GAS & OIL 620-850-5326	1
	5			DIESEL	373.23	619	REFUSE DIST DIESEL & PROPA 619-830-5326	1
	6			GAS	156.94	619	ELEC DISTB DIESEL 619-830-5305	1
	7			DIESEL	218.74	101	ELEC DIST GAS & OIL 101-220-5326	1
	8			GAS	28.11	618	FIRE DIESEL & PROPANE 618-812-5305	1
	9			GAS	187.29	618	WATER PROD GAS & OIL 618-810-5305	1
	10			GAS	71.71	621	WTR DIST GAS & OIL 621-870-5305	1
	11			DIESEL	332.13	101	SEWER DIST GAS & OIL 101-120-5301	1
	12			INDOL ISO VG 46	149.04	620	ADMIN COMMODITIES 620-850-5301	1
	13			GAS	480.98	101	REFUSE DISTB COMMODITIES 101-220-5305	1
				INVOICE TOTAL	5,504.97		FIRE GAS & OIL	
				VENDOR TOTAL	5,504.97			
				3246 CORE & MAIN LP				
P310792	1	9/22/21	9/03/21	FLAG SHOOTER	642.31	618	618-810-5301	1
				INVOICE TOTAL	642.31		WTR DIST COMMODITIES	
P385046	1	9/22/21	9/07/21	RESTOCK	519.67	621	621-870-5301	1
				INVOICE TOTAL	519.67		SEWER DIST COMMODITIES	
P550461	1	9/22/21	9/09/21	RESTOCK	459.57	621	621-870-5301	1
				INVOICE TOTAL	459.57		SEWER DIST COMMODITIES	
				VENDOR TOTAL	1,621.55			
				2515 EBH & ASSOCIATES, P.A.				
13317	1	9/22/21	8/31/21	LAGOON CELL 1 IMPROVEMENTS	5,273.73	621	621-870-5501	1
							SEWER DIST CAPITAL OUTLAY	

SUPPORTING DOCUMENTS FOR COUNCIL CHECKS (09/21/21)

INVOICE#	LINE	DUE DATE	INVOICE DATE	REFERENCE	PAYMENT AMOUNT	DIST	GL ACCOUNT	CK SQ
				INVOICE TOTAL	5,273.73			
				VENDOR TOTAL	5,273.73			
091521	1	9/22/21	8/24/21	2154 EMC INSURANCE COMPANIES MILLER CLAIM DEDUCTIBLE	500.00	101	101-110-5301 LEGISLATIVE COMMODITIES	1
				INVOICE TOTAL	500.00			
				VENDOR TOTAL	500.00			
91021	1	9/22/21	9/10/21	3498 ENVIROCO, INC FLOATING BAFFLES/APPURTENANCES	31,950.00	621	621-870-5501 SEWER DIST CAPITAL OUTLAY	1
				INVOICE TOTAL	31,950.00			
				VENDOR TOTAL	31,950.00			
322132	1	9/22/21	8/31/21	2964 EPP'S SERVICE, INC. GAS	16.48	101	101-210-5305 POLICE GAS & OIL	1
				INVOICE TOTAL	16.48			
				VENDOR TOTAL	16.48			
091521	1	9/22/21	9/15/21	3023 FAMILY HEALTH AMERICA, L.C. SEPT ADMIN SERVICES/DEBIT CARD	139.87	101	101-110-5201 LEGISLATIVE CONTRACTUAL SE	1
				INVOICE TOTAL	139.87			
				VENDOR TOTAL	139.87			
SS380023460	1	9/22/21	8/31/21	1044 FOLEY INDUSTRIES ANNUAL GENERATOR INSPECTION	514.35	101	101-310-5210 PARK EQUIPMENT MAINTENANCE	1
				INVOICE TOTAL	514.35			
SS380023462	1	9/22/21	8/31/21	ANNUAL GENERATOR INSPECTION	569.89	621	621-870-5210 SEWER DIST EQUIP MAINTENAN	1
				INVOICE TOTAL	569.89			
SS380023464	1	9/22/21	8/31/21	ANNUAL GENERATOR INSPECTION	582.11	621	621-870-5210 SEWER DIST EQUIP MAINTENAN	1
				INVOICE TOTAL	582.11			
SS380023466	1	9/22/21	8/31/21	ANNUAL GENERATOR INSPECTION	514.35	101	101-120-5210 ADMIN EQUIP MAINTENANCE	1
				INVOICE TOTAL	514.35			
				VENDOR TOTAL	2,180.70			
091021	1	9/22/21	9/10/21	1965 HASSMAN TERMITE, INC. PEST SPRAYING	111.00	101	101-410-5201 STREET CONTRACTUAL SERVICE	1

SUPPORTING DOCUMENTS FOR COUNCIL CHECKS (09/21/21)

INVOICE#	LINE	DUE DATE	INVOICE DATE	REFERENCE	PAYMENT AMOUNT	DIST	GL ACCOUNT	CK SQ
				INVOICE TOTAL	111.00			
0910211	1	9/22/21	9/10/21	PEST SPRAYING	65.00	619	619-830-5201 ELEC DIST CONTRACTUAL SERV	1
				INVOICE TOTAL	65.00			
				VENDOR TOTAL	176.00			
				1565 HILLSBORO CONVENTION & TOURISM				
091521	1	9/22/21	9/15/21	SEPTEMBER APPROPRIATIONS	1,000.00	101	101-550-5871 APPROPRIATIONS TO CVB	1
				INVOICE TOTAL	1,000.00			
				VENDOR TOTAL	1,000.00			
				1184 HILLSBORO DEVELOPMENT CORP				
091521	1	9/22/21	9/15/21	MONTHLY BILLBOARD RENTAL	100.00	101	101-910-5350 SIGN RENTAL	1
				INVOICE TOTAL	100.00			
				VENDOR TOTAL	100.00			
				2670 IMA, INC.				
091521	1	9/22/21	9/07/21	INSTALLMENT 7 OF 10	2,318.40	101	101-110-5220 LEGISLATIVE INS PREMIUMS	1
	2			INSTALLMENT 7 OF 10	2,318.40	618	618-812-5220 WATER PROD INSURANCE PREMI	1
	3			INSTALLMENT 7 OF 10	2,318.40	619	619-830-5220 ELEC DISTB INSURANCE PREMI	1
	4			INSTALLMENT 7 OF 10	2,318.40	620	620-850-5220 REFUSE DISTB INS PREMIUM	1
	5			INSTALLMENT 7 OF 10	2,318.40	621	621-870-5220 SEWER DISTB INS PREMIUMS	1
				INVOICE TOTAL	11,592.00			
				VENDOR TOTAL	11,592.00			
				3496 JAMES CARR CONSTRUCTION				
090221	1	9/22/21	9/02/21	FIX WINDOW SASH, GLAZE, PAINT	161.60	101	101-350-5201 MUSEUM CONTRACTUAL SERVICE	1
				INVOICE TOTAL	161.60			
				VENDOR TOTAL	161.60			
				1080 K M U				
200005710	1	9/22/21	9/08/21	UTILITY LOCATE WORKSHOP	400.00	618	618-810-5301 WTR DIST COMMODITIES	1
				INVOICE TOTAL	400.00			
				VENDOR TOTAL	400.00			
				1449 K S ONE-CALL SYSTEM, INC				
1080291	1	9/22/21	8/31/21	LOCATE FEES	6.00	619	619-830-5301 ELEC DIST COMMODITIES	1

SUPPORTING DOCUMENTS FOR COUNCIL CHECKS (09/21/21)

INVOICE#	LINE	DUE DATE	INVOICE DATE	REFERENCE	PAYMENT AMOUNT	DIST	GL ACCOUNT	CK SQ
				INVOICE TOTAL	6.00			
1080292	1	9/22/21	8/31/21	LOCATE FEES	103.20	619	619-830-5301 ELEC DIST COMMODITIES	1
				INVOICE TOTAL	103.20			
				VENDOR TOTAL	109.20			
091521	1	9/22/21	9/13/21	1216 KANSAS POWER POOL ELECTRIC PURCHASE	264,724.10	619	619-830-5328 ELEC DIST ELECTRIC PURCHAS	1
				INVOICE TOTAL	264,724.10			
				VENDOR TOTAL	264,724.10			
96896	1	9/22/21	8/31/21	1225 K S PUBLISHING VENTURES, LLC WEBSITE ADS	32.25	101	101-120-5301 ADMIN COMMODITIES	1
				INVOICE TOTAL	32.25			
				VENDOR TOTAL	32.25			
21252	1	9/22/21	9/03/21	3416 MUNICOM, LLC ANNUAL DISCLOSURE CONSULT	1,100.00	101	101-110-5201 LEGISLATIVE CONTRACTUAL SE	1
				INVOICE TOTAL	1,100.00			
				VENDOR TOTAL	1,100.00			
4052361-0	1	9/22/21	9/03/21	1475 OFFICE PLUS OF KANSAS FOLDERS	141.10	101	101-120-5301 ADMIN COMMODITIES	1
				INVOICE TOTAL	141.10			
				VENDOR TOTAL	141.10			
2160140670	1	9/22/21	9/08/21	3129 PACE ANALYTICAL SERVICES, INC. SEWER ANALYSIS	304.90	621	621-870-5201 SEWER DIST CONTRACTUAL SER	1
				INVOICE TOTAL	304.90			
				VENDOR TOTAL	304.90			
562977	1	9/22/21	9/02/21	3422 PLENERT MOWING AUGUST MOWING	240.00	101	101-350-5201 MUSEUM CONTRACTUAL SERVICE	1
				INVOICE TOTAL	240.00			
562982	1	9/22/21	9/02/21	AUGUST MOWING	1,560.00	101	101-310-5201 PARK CONTRACTUAL SERVICES	1
				INVOICE TOTAL	1,560.00			
				VENDOR TOTAL	1,800.00			

SUPPORTING DOCUMENTS FOR COUNCIL CHECKS (09/21/21)

INVOICE#	LINE	DUE DATE	INVOICE DATE	REFERENCE	PAYMENT AMOUNT	DIST	GL ACCOUNT	CK SQ
2021419	1	9/22/21	8/31/21	2601 RAY LINDSEY COMPANY LIFT STATION REPAIR PARTS	603.58	621	621-870-5301 SEWER DIST COMMODITIES	1
				INVOICE TOTAL	603.58			
				VENDOR TOTAL	603.58			
249885	1	9/22/21	9/02/21	2268 ROD'S TIRE & SERVICE, INC. BACKHOE TIRES	1,246.42	618	618-810-5210 WTR DIST EQUIP MAINTENANCE	1
				INVOICE TOTAL	1,246.42			
250004	1	9/22/21	9/03/21	BATTERIES	251.50	619	619-830-5210 ELEC DIST EQUIP MAINTENANC	1
				INVOICE TOTAL	251.50			
250313	1	9/22/21	9/11/21	TIRE REPAIR	88.00	101	101-410-5215 STREET VEHICLE MAINTENANCE	1
				INVOICE TOTAL	88.00			
250632	1	9/22/21	9/15/21	TIRES	296.00	101	101-410-5215 STREET VEHICLE MAINTENANCE	1
				INVOICE TOTAL	296.00			
				VENDOR TOTAL	1,881.92			
0293706409	1	9/22/21	8/23/21	2272 SCHWAN'S HOME SERVICE CONCESSIONS	128.65	101	101-320-5351 POOL CONCESSIONS	1
				INVOICE TOTAL	128.65			
				VENDOR TOTAL	128.65			
5144120-02	1	9/22/21	7/01/21	1110 STANION WHOLESALE ELECTRIC 107 RESTOCK	74.13	619	619-830-5301 ELEC DIST COMMODITIES	1
				INVOICE TOTAL	74.13			
5144120-03	1	9/22/21	9/03/21	RESTOCK	220.90	619	619-830-5301 ELEC DIST COMMODITIES	1
				INVOICE TOTAL	220.90			
5184956-00	1	9/22/21	8/30/21	RESTOCK	107.67	619	619-830-5301 ELEC DIST COMMODITIES	1
				INVOICE TOTAL	107.67			
5184956-01	1	9/22/21	8/30/21	RESTOCK	35.89	619	619-830-5301 ELEC DIST COMMODITIES	1
				INVOICE TOTAL	35.89			
				VENDOR TOTAL	438.59			
091521	1	9/22/21	9/07/21	1564 BEN STEKETEE FIRE SERVICE PINS REIMBURSE	29.85	101	101-220-5301	1

SUPPORTING DOCUMENTS FOR COUNCIL CHECKS (09/21/21)

SCHEDULED CLAIMS LIST

INVOICE#	LINE	DUE DATE	INVOICE DATE	REFERENCE	PAYMENT AMOUNT	DIST	GL ACCOUNT	CK SQ
							FIRE COMMODITIES	
				INVOICE TOTAL	29.85			
				VENDOR TOTAL	29.85			
				3227 TOUCHTONE COMMUNICATIONS				
1365916	1	9/22/21	9/01/21	LONG DISTANCE	33.10	101	101-120-5280 ADMIN UTILITIES	1
				INVOICE TOTAL	33.10			
13659161	1	9/22/21	9/01/21	LONG DISTANCE	.12	101	101-120-5280 ADMIN UTILITIES	1
				INVOICE TOTAL	.12			
				VENDOR TOTAL	33.22			
				1939 U S A BLUEBOOK				
708794	1	9/22/21	8/26/21	HAZARDOUS MATERIAL SIGNS/EQUIP	275.25	618	618-812-5301 WATER PROD COMMODITIES	1
				INVOICE TOTAL	275.25			
709004	1	9/22/21	8/26/21	HAZARDOUS MATERIAL SIGNS/EQUIP	569.12	618	618-812-5301 WATER PROD COMMODITIES	1
				INVOICE TOTAL	569.12			
714670	1	9/22/21	9/01/21	480 VOLT STICKERS,RED PAINT	176.58	619	619-830-5301 ELEC DIST COMMODITIES	1
				INVOICE TOTAL	176.58			
715016	1	9/22/21	9/01/21	MARKING FLAGS	108.45	619	619-830-5301 ELEC DIST COMMODITIES	1
				INVOICE TOTAL	108.45			
				VENDOR TOTAL	1,129.40			
				CENTRAL NATIONAL BANK TOTAL	362,302.21			
				TOTAL MANUAL CHECKS	.00			
				TOTAL E-PAYMENTS	.00			
				TOTAL PURCH CARDS	.00			
				TOTAL ACH PAYMENTS	273,488.31			
				TOTAL OPEN PAYMENTS	88,813.90			
				GRAND TOTALS	362,302.21			

SUPPORTING DOCUMENTS FOR COUNCIL CHECKS (09/21/21)

Staff Report



To: Honorable Mayor and City Council

From: Matt Stiles, City Administrator

Date: 9/21/2021

Re: Charter Ordinance 22 – Allowing the City Website to be the Official Newspaper

Background: Charter Ordinance 22, if passed would allow the City to designate the city’s website as the official city newspaper for publication with a follow-up resolution. As described in the ordinance, KSA 12-1651, which outlines requirements for the official city newspapers, does not apply uniformly to all cities in Kansas. Under the city’s home rule power, the city can offer substitute provisions for uniformly applied state law.

All charter ordinances require a 2/3 majority vote of the governing body including the Mayor. The full ordinance must be published twice in consecutive weeks then there is a 60 day period in which the protest petition can be filed. The petition must be signed by no less than 10% of the electors that voted in the last regular city election. According to the November 2020 general election results there were 1,125 votes cast in the city election, meaning 113 registered voters would need to sign a petition. If a petition is successfully filed it would go to general vote of the electorate.

There are two factors related to this proposed ordinance. First is the cost of legal publications which is roughly \$5,000 per year, but can vary depending on actions taken. Second is the publication schedule for the newspaper results in official actions of the city being delayed by a week. Using the city’s website ensures that actions taken by the council that require publication can take effect the next day.

Financial Impact: The financial gain from moving to the city website is roughly \$5,000 per year. We also purchases ads with both the Marion Record and Hillsboro Free Press which would continue. For informational purposes the legal publication rate at the Marion Record is \$14.95 per column inch and a \$5 fee for affidavits of publication. The column inch rate for the Free Press is \$12.00, with no charge for affidavits.

Recommendation: Approve Charter Ordinance 22 and authorize the Mayor to sign.

(Published in *The Hillsboro Star Journal* on _____, 2021 and _____, 2021)

CHARTER ORDINANCE NO. 22

A CHARTER ORDINANCE EXEMPTING THE CITY OF HILLSBORO, KANSAS, FROM THE PROVISIONS OF K.S.A. 12-1651, PROVIDING SUBSTITUTE PROVISIONS REGARDING THE DESIGNATION OF THE OFFICIAL CITY NEWSPAPER, AND CREATING SECTION 1-119, CHAPTER I, ARTICLE I OF THE CODE OF THE CITY OF HILLSBORO, KANSAS.

WHEREAS, the City of Hillsboro, Kansas (the “City”), is a city of the second class duly organized and existing under the laws of the State of Kansas; and

WHEREAS, pursuant to Article 12, Section 5, of the Constitution of the State of Kansas, cities are empowered to determine their local affairs and government except for legislative enactments applicable uniformly to all cities; and

WHEREAS, K.S.A. 12-1651 applies to the City, and its provisions are not uniformly applicable to all cities in that K.S.A. 12-1651 applies only to cities of the second and third class; and

WHEREAS, the Governing Body of the City hereby determines that it is in the best interest of the City to exempt the City from K.S.A. 12-1651 and to provide substitute provisions for such statute; and

WHEREAS, the City finds it necessary and advisable to create Section 1-119 of Chapter I, Article I of the Code of the City of Hillsboro, Kansas (the “City”) relating to the designation of the official city newspaper.

NOW, THEREFORE, BE IT ORDAINED BY THE GOVERNING BODY OF THE CITY OF HILLSBORO, KANSAS:

Section 1. Inapplicability. The City, by virtue of the powers vested in it by Article 12, Section 5, of the Constitution of the State of Kansas, hereby elects to exempt itself from and hereby make inapplicable to it the provisions of K.S.A. 12-1651. Such referenced provision is applicable to the City but is part of enactments not uniformly applicable to all cities and the City finds and determines it necessary and advisable to provide substitute provisions as set forth herein.

Section 2. Substitute Provisions. By virtue of the powers vested in it by Article 12, Section 5 of the Constitution of the State of Kansas, the City hereby enacts the following substitute and additional provisions of K.S.A. 12-1651 by creating Section 1-119, Chapter I, Article I of the Code. Section 1-119, Chapter I, Article I of the Code is created to read as follows:

1-119. Official Newspaper or Website.

The Governing Body of the City shall designate by resolution from time to time an official city newspaper that meets one of the qualifications set forth below. Once designated

the publication method shall be the official city newspaper until such time as the governing body designates a different official city newspaper by resolution.

- (a) The newspaper selected as the official city newspaper may be a printed newspaper which has the following qualifications: (i) It must be published at least weekly 50 times each year and have been so published for at least one year prior to the publication of any official city publication; (ii) It must be entered at the post office of publication as second-class mail matter; (iii) More than 50% of the circulation must be sold to the subscribers either on a daily, weekly, monthly or yearly basis; and (iv) It shall have general paid circulation on a daily, weekly, monthly or yearly basis in the county and shall not be a trade, religious or fraternal publication; or

- (b) In the alternative, the official city newspaper may be a designated website which has the following qualifications: (i) It must be a public facing website available to website users at all times, except during website maintenance as reasonably determined necessary by the City Administrator; (ii) The website must be easily accessible from the City's website home page (<https://www.cityofhillsboro.net>); (iii) It must be available to website users free of charge; and (iv) All current notices and unrepealed ordinances uploaded to the website for publication shall be uploaded in their entirety during any period they are in effect.

Section 3. Publication. This Charter Ordinance shall be published once each week for two consecutive weeks in the official City newspaper.

Section 4. Effective Date. This is a Charter Ordinance and shall take effect 61 days after final publication, unless a sufficient petition for a referendum is filed and a referendum held on this Ordinance as provided in Article 12, Section 5, Subdivision (c) (3) of the Constitution of the State of Kansas, in which case this Ordinance shall become effective if approved by the majority of the electors voting thereon.

[Remainder of Page Intentionally Left Blank]

PASSED, APPROVED AND ADOPTED by two-thirds majority of the Governing Body of the City and approved by the Mayor this 21st day of September, 2021.

CITY OF HILLSBORO, KANSAS

[seal]

By _____
Lou Thurston, Mayor

ATTEST:

By _____
Danielle Bartel, City Clerk

Passed:
Published:

Effective:

EXCERPT OF MINUTES

The Governing Body of the City met at City Hall at the usual place in the City on September 21, 2021 at 4:00 p.m., with Mayor Lou Thurston presiding, and the following members of the Governing Body present:

and the following members absent:

Thereupon, and among other business, there was presented to the Governing Body, a Charter Ordinance entitled:

A CHARTER ORDINANCE EXEMPTING THE CITY OF HILLSBORO, KANSAS, FROM THE PROVISIONS OF K.S.A. 12-1651, PROVIDING SUBSTITUTE PROVISIONS REGARDING THE DESIGNATION OF THE OFFICIAL CITY NEWSPAPER, AND CREATING SECTION 1-119, CHAPTER I, ARTICLE I OF THE CODE OF THE CITY OF HILLSBORO, KANSAS.

Thereupon, the Charter Ordinance was considered and discussed; and on motion of _____, seconded by _____, the Charter Ordinance was adopted by a two-thirds majority vote of all members elect of the Governing Body.

Thereupon, the Charter Ordinance having been adopted by a two-thirds majority vote of the members of Governing Body, it was given No. 22 and directed to be signed by the Mayor and attested by the City Clerk; and the City Clerk was directed to cause the publication of the Ordinance twice as set forth therein and required by law.

CITY CLERK'S
CERTIFICATION OF EXCERPT OF MINUTES

I hereby certify that the foregoing is a true and correct Excerpt of the Minutes of the proceedings at the _____, 2021 meeting of the Governing Body of the City of Hillsboro, Kansas.

[seal]

Danielle Bartel, City Clerk

Staff Report



To: Honorable Mayor and City Council
From: Matt Stiles, City Administrator
Date: 9/21/2021
Re: KDOT Cost Share Grant Application

Background: The next round of KDOT Cost Share Grant for local streets is approaching. Darin Neufeld from EBH has asked if the City would be interested in resubmitting our previous round projects. The attached project sheet shows we would complete Adams from 1st to A street and Commerce Street from Industrial to the wrap around on Santa Fe.

The minimum required cost match is 15%. Darin has provided estimates for 15%, 20% and 25%. To have a competitive application a 20% match is probably advisable. The city would also be responsible for 100% of the design and inspection, which have been estimated at \$95,000 per project.

Financial Impact: The required city contribution would be close approximately \$415,200. KDOTs contribution would be \$900,800 in the 20% scenario. The true cost to the city is 32% when factoring in design and inspection. The project funds would be needed in the 2023 or 2024 budget year. That amount would likely need to be financed by the city. If the council was adverse to the cost, the project could be reduced to just Adams street or Commerce. The percentage could also be reduced.

Recommendation: Approve submitting a grant application for KDOT's cost share grant for the _____ project at a local match of ____%.

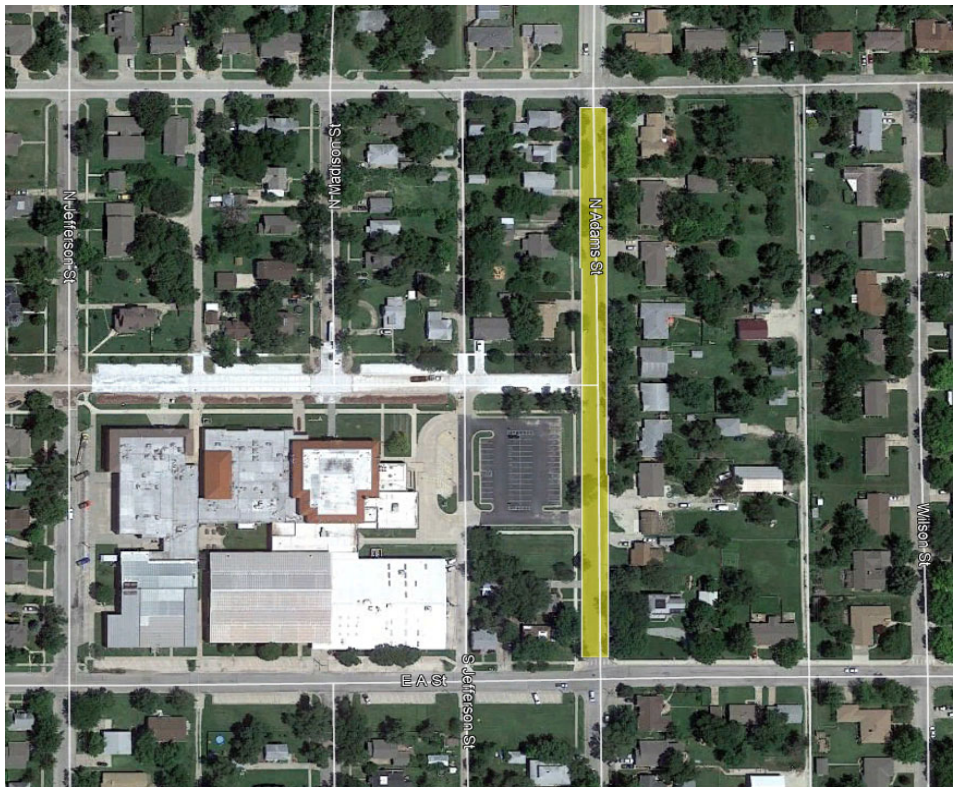
Adams St - A St to First St

Scope: Remove all pavement & curb, new 36' back to back street of 6" concrete pavement over 4" crushed base and geogrid

Item	Quantity	Unit	Unit Cost	Total
Mobilization	1	LS	\$ 50,000.00 /ea	\$ 50,000.00
Pavement and Base Removal	3500	sy	\$ 12.00 /sy	\$ 42,000.00
4" Crushed Base over Geo	3800	sy	\$ 20.00 /sy	\$ 76,000.00
6" Concrete Pavement	3100	sy	\$ 65.00 /sy	\$ 201,500.00
Rem/repl Curb & Gutter	1800	lf	\$ 45.00 /lf	\$ 81,000.00
Seeding	1	LS	\$ 2,500.00 /ea	\$ 2,500.00
Traffic Control	1	LS	\$ 5,000.00 /ea	\$ 5,000.00
Construction Total				\$ 458,000.00

KDOT Cost Share program only funds construction 100% of design and inspection is funded by local entity	KDOT Share 85%	\$ 389,300.00
Design approx = \$45,000	Local Share 15%	\$ 68,700.00
Inspection approx = \$50,000	KDOT Share 80%	\$ 366,400.00
	Local Share 20%	\$ 91,600.00
	KDOT Share 75%	\$ 343,500.00
	Local Share 25%	\$ 114,500.00

Total Local Costs 15% construction match \$163,700 / 20% construction match \$186,600 / 25% construction match \$209,500



Commercial - Industrial St to end of pavement on Santa Fe

Scope: Grade Existing Rock base, add material as required to get exact width, new 36' back to back street of 8" concrete pavement

Item	Quantity	Unit	Unit Cost	Total
Mobilization	1	LS	\$ 50,000.00 /ea	\$ 50,000.00
Grading & Prep	6300	sy	\$ 10.00 /sy	\$ 63,000.00
8" Concrete Pavement	5400	sy	\$ 80.00 /sy	\$ 432,000.00
Curb & Gutter	3300	lf	\$ 35.00 /lf	\$ 115,500.00
Seeding	1	LS	\$ 2,500.00 /ea	\$ 2,500.00
Traffic Control	1	LS	\$ 5,000.00 /ea	\$ 5,000.00
Construction Total				\$ 668,000.00

KDOT Cost Share program
only funds construction
100% of design and inspection
is funded by local entity

Design approx = \$45,000

Inspection approx = \$50,000

KDOT Share 85% \$ 567,800.00

Local Share 15% \$ 100,200.00

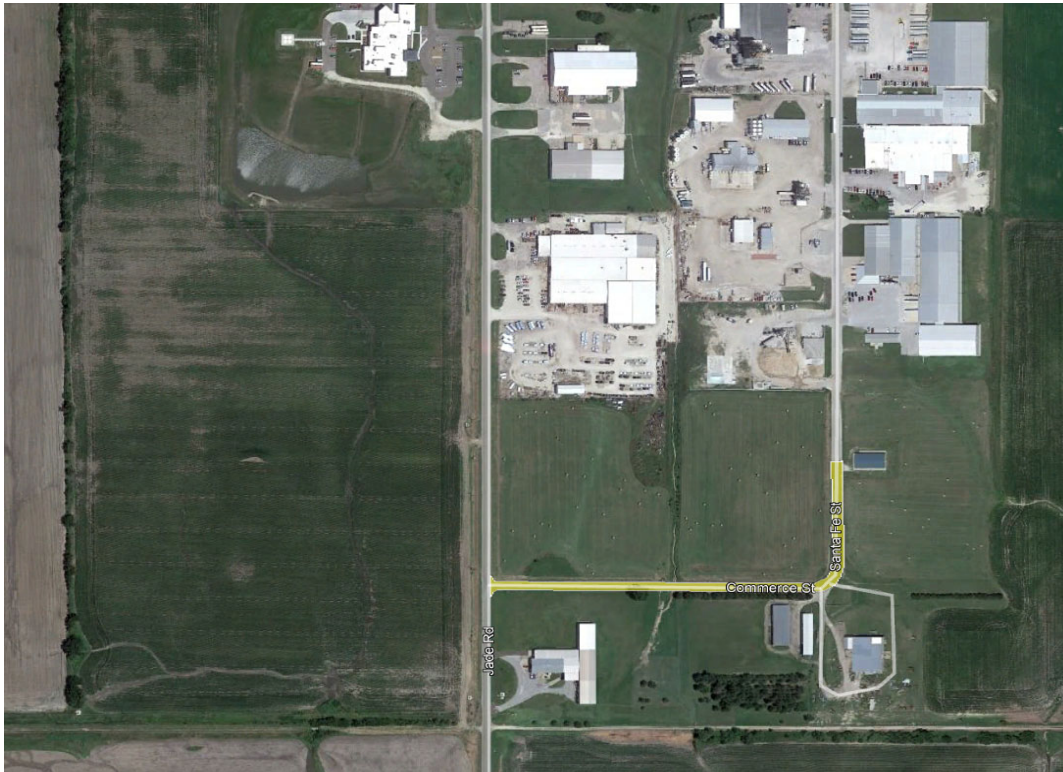
KDOT Share 80% \$ 534,400.00

Local Share 20% \$ 133,600.00

KDOT Share 75% \$ 501,000.00

Local Share 25% \$ 167,000.00

Total Local Costs 15% construction match \$195,200 / 20% construction match \$228,600 / 25% construction match \$262,000



Staff Report



To: Honorable Mayor and City Council

From: Matt Stiles, City Administrator

Date: 9/21/2021

Re: CBK Agreement

Background: The proposed agreement is with CBK for collection services for delinquent utility and municipal court bills. Currently we have over \$80,000 in uncollected debt many of which are years past due. For uncollected delinquent debts, the City utilizes the Kansas Set-off program which collects debts from individual state income tax returns. Often cases submitted to the Set-off program can stay in the system for years before collecting, if they are ever collected on.

As proposed in the agreement CBK would take on collection duties for the city, collecting a 30% fee for outstanding principal collected. While that may seem high, is in line with industry standards which can reach 50%. Attached is some information about CBK, its methods and other communities that have opted to use their services. To date 122 cities use their services along with 8 district courts, 2 counties and Kansas Department of Health and Environment.

An important thing to remember with any collection service is that the City controls what accounts are shared with the service. Operationally we always try to work with customers who struggle to pay. It is only those who do not work with us that would be sent over to CBK. The City completely controls what accounts are submitted to CBK. Generally accounts or cases which we have not received communication after 6 months would be referred to CBK. In that time the City would make multiple attempts to contact the person. If the council would prefer to adopt a more formal policy on the use CBK then we could provide that at a future meeting.

Financial Impact: Obviously there is a large amount of uncollected utility fees and court fees. The city has had limited success at collecting those in house. Bring on CBK would greatly increase the likelihood of collecting some portion of the debt. Though there is a 30% fee, collecting 70% of a delinquent account is much more than we have been able to collect independently. The fee based CBK agreement means that the City pays nothing unless the debt is collected on.

Recommendation: Approve the agreement with CBK and authorize the Mayor to sign.



GOVERNMENT COLLECTION CONTRACT

THIS AGREEMENT made and entered into this ____ day of _____, _____ by and between CBK, Inc., a corporation hereinafter referred to as "AGENCY" and, _____, a governmental entity, hereinafter referred to as "CLIENT".

WITNESSETH:

WHEREAS, CLIENT desires to designate various accounts for collections; and WHEREAS, Agency desires to accept and pursue said claims.

NOW THEREFORE, in consideration of mutual covenants herein contained, the parties hereto do agree as follows:

1. Agency will use its best efforts and resources to collect accounts forwarded. Collection activities shall be in compliance with Federal, State and Local laws and regulations, including the Fair Debt Collection Practices Act. Agency shall be courteous and businesslike, consistent with the image and reputation of Client. To the best of their ability, Client warrants that all accounts are valid and legally enforceable debts. Client will send accurate and legitimate claims and further agrees to cooperate with Agency in the investigation of the same, which includes providing documentation supporting the claim as may be requested by Agency, and to keep Agency apprised of any changes in circumstance or information regarding the same. Agency shall be entitled to the contingency fee and costs on the accounts forwarded as stated below, upon the Agency sending its first communication to Debtor.
2. Fees and Charges
 - a. AGENCY/ AR; Agency shall charge, and Client agrees to pay Agency, a fee on principal amounts collected at a rate of 30 % on all accounts forwarded to Agency (in the event the Client has an Ordinance, agreement, or contract in place allowing for fees to be added to the debt, Agency would then add the percentage to the amount turned for collection).
 - b. Municipal Court Debts: The cost of collections for these debts will be added to the amount forwarded and charged to the debtor. Agency will pay Client 100% of the amount forwarded, when collected. The rate the Agency will charge for these debts will be 30 %.
 - c. AGENCY/ CHECKS; At the election of the Client, Agency will collect on returned checks that are sent both electronically and manually. Agency will pay the Client **100%** of the face amount collected and 0 % of any Returned Check Service Fee on all checks when collected by Agency or through the efforts of Agency. Agency will also pay the Client 0 % of any damages collected on any check that is collected through legal action. Agency shall retain any attorney fees assessed, pursuant to statute. Agency shall remit payment to Client for all returned checks collected for the previous month by the 10th of the following month. Check Clients must provide the attached Addendum A with this agreement.
 - d. All interest that is charged on all accounts forwarded to Agency by Client will be split at a rate of 0 % for the Client and 100 % for the Agency.
 - e. REFERRAL TO ATTORNEY; The Agency shall institute legal proceedings in the name of Client with the attorney of Agency's choosing. This includes the selection of local counsel that may appear on behalf of Client. Client has the right to object to the use of any attorney with good cause, to include conflicts. All litigation instituted shall be in the name of the Client and all court costs, surcharges, and other litigation expenses will be advanced by Agency and said funds will be deducted off the following Client's transmittal disbursement to reimburse the Agency.
 - i. The fees stated in (c) are intended to cover a routine case through the district court level. Unusual situations, such as counter claims, appeals, or bankruptcy litigation, are not covered. In the event of such unusual situations, cross petition or any other claim, Agency will advise Client in a timely matter. Client has the option to either recall the matter and defend the counter claim or have the Agency's attorney proceed with the representation of the matter at a mutually agreed upon hourly rate.
 - ii. In the event that Client's cases or claims are referred out of state, the contingency fee agreement shall be increased to 50%, as allowed by law.
3. STATEMENTS; The Agency will submit monthly statements to Client of the net amount received the previous calendar month, by the 10th of the month following collection, along with the remittance of all monies recovered minus Agency fee. The Client shall report payments (via fax, Client Portal, email, or through another form of communication agreed upon by both parties) at the time of receipt on accounts assigned to the Agency. Said statements shall be sent to Client at

_____ or another address designated by the Client in writing. The Client agrees to remit to Agency any amount due to Agency within thirty (30) days of receipt of the monthly statement.

4. RECORDS; The Agency will maintain records as they pertain to each account in such a manner as to be auditable by Client during normal working business hours upon reasonable notice given to Agency.
5. COMPROMISE SETTLEMENT; Agency shall not have authority to accept a compromise settlement on the amount forwarded, without the Client's prior approval.
6. TERM; This Agreement shall remain in full force and effect for twenty-four (24) months. This contract shall renew upon the initial and subsequent anniversary dates for a length of time equal to the initial term stated in this agreement, unless notice is received by either party of intent of non-renewal at least 90 days prior to the anniversary date.
7. TERMINATION; Either party may terminate this Agreement (with or without cause and without penalty) by giving thirty (30) days written notice of termination to the other party. For accounts on which judgment has been rendered through the means of legal action, Agency will charge and Client agrees to pay, the same fee Agency would have been entitled to receive on such accounts if the Agreement had not been terminated.
8. REPORTS; Agency shall submit the following reports to Client monthly:
 - a. Acknowledgment (Report sent based on when Client forwards accounts...monthly, bi monthly or weekly)
 - b. Cancellation/Deletion
 - c. Transmittal/Client Statement
9. INDEMNITY;
 - a. Agency agrees to defend and hold the Client harmless from and against any and all claims, judgments, costs, liabilities, negligent or wrongful acts, damages and expenses, including reasonable attorney fees and court costs occasioned by, arising out of, related to, or in connection with any fact or omission of the Agency and its employees and agents, or any of them from failure of the Agency to comply with the provisions of this Agreement.
 - b. Client agrees to defend and hold the Agency harmless from and against any and all claims, judgments, costs, liabilities, negligent or wrongful acts, damages and expenses, including reasonable attorney fees and court costs occasioned by or arising out of, related to, or in connection with any act or omission of the Client and its employees or from failure of the Client to comply with the provisions of the Agreement.
10. GENERAL PROVISIONS;
 - a. Agency shall serve as an independent contractor. This agreement does not constitute an employer/employee relationship.
 - b. The captions of this Agreement are for convenience only and are not to be construed as modifying the text of the Agreement.
 - c. All terms and conditions of this Agreement are severable. If one or more of the terms and conditions are deemed unenforceable, the remainder shall continue in full force and effect.
 - d. This Agreement constitutes the entire Agreement of the parties and cannot be modified without a writing signed by both parties.
 - e. All notices required under this Agreement shall be in writing and sent Certified Mail, Return Receipt Requested, and shall be effective upon receipt.
 - f. Client agrees to comply with all applicable laws, rules and regulations relating to the services provided hereunder. This agreement shall be governed by and construed in accordance with the laws of the State of Kansas. Client may assign this Agreement only with prior written consent of Agency. This Agreement shall inure to the benefit of and be binding upon the successors and assigns of Agency and the heirs, executor, administrators, successors, and assigns of Client.
 - g. This Agreement shall become effective as of the date listed below and shall remain in effect until either party serves 30 day written notice to the other. Amendments to fees and charges shall take effect immediately. Other such amendments shall be effective thirty (30) days from mailing, except as specifically provided herein; this Agreement may not be altered, amended, or otherwise varied except by written mutual agreement of the parties.
11. CONFIDENTIALITY; Agency shall not disclose information relating to the debtor(s) to persons other than debtor(s), parents, or guardians of debtor(s) as necessary for payment purposes. Agency shall not disclose information relating to Client's operations without written consent of the Client or duly issued Court process or orders. It is mutually understood that the Agency's obligation to not disclose confidential and proprietary Client information hereunder shall survive the termination of this Agreement. The terms and conditions of this agreement will not be disclosed to anyone or any entity without written authorization.
12. ENTIRE AGREEMENT; This Agreement constitutes the entire Agreement between the parties with respect to its subject matter, supersedes any previous agreements and understandings, and can be changed only by written agreement signed by all parties. This agreement may be executed in any number of counterparts and all such counterparts taken together shall be deemed to constitute one and

the same instrument. Delivery of an executed counterpart of a signature page of this Agreement by facsimile and/or email shall be effective as delivery of a manually executed counterpart of this Agreement.

- 13. Where Applicable and under the Health Insurance and Portability and Accountability Act of 1996 (HIPAA), the Client is required to enter into specific Business Associate Agreements setting forth requirements of their agents relative to maintaining the privacy and confidentiality of patient-identifiable health information. To comply with this requirement, the parties agree to enter into a separate Business Associate Agreement meeting the requirements of HIPAA, prior to April 14, 2003.
- 14. Where applicable, and for all consumer debts, Agency further agrees to comply with the Fair Debt Collection Practices Act (FDCPA), known as Public Law #95-109.
- 15. Any and all notices required herein, shall be sent to the addressee and address as designated below under AGENCY and CLIENT.

IN WITNESS WHEREOF, the parties have executed this Agreement in duplicate.

AGENCY:

CLIENT:

CBK, Inc.

Address:

Address:

3615 SW 29th St

Topeka, KS 66614

Phone: _____

Authorized Representative:

Authorized Representative:

Name: _____ (please print)

Name: _____ (please print)

Signature: _____

Signature: _____

Title: _____

Title: _____

Date: _____

Date: _____



District Courts:

1. 1st Judicial District
 - Leavenworth, KS County
 - Atchison, KS County
2. 6th Judicial District
 - Bourbon, KS County
 - Linn, KS County
 - Miami, KS County
3. 15th Judicial District
 - Cheyenne, KS County
 - Logan, KS County
 - Rawlins, KS County
 - Sheridan, KS County
 - Sherman, KS County
 - Thomas, KS County
 - Wallace, KS County
4. 17th Judicial District
 - Decatur, KS County
 - Graham, KS County
 - Norton, KS County
 - Osborne, KS County
 - Phillips, KS County
 - Smith, KS County
5. 23rd Judicial District
 - Ellis, KS County
 - Gove, KS County
 - Rooks, KS County
 - Trego, KS County
6. 26th Judicial District
 - Grant, KS County
 - Haskell, KS County
 - Morton, KS County
 - Seward, KS County
 - Stanton, KS County
 - Stevens, KS County
7. 30th Judicial District
 - Barber, KS County
 - Harper, KS County
 - Kingman, KS County
 - Pratt, KS County
 - Sumner, KS County
8. 31st Judicial District
 - Allen, KS County
 - Neosho, KS County
 - Wilson, KS County
 - Woodson, KS County

Counties:

1. Shawnee County
2. Norton County

State Agencies:

Kansas Department of Health and Environment



Municipalities:

1. Altoona
2. Andover
3. Atwood
4. Auburn
5. Augusta
6. Baldwin City
7. Basehor
8. Baxter Springs
9. Bel Aire
10. Bird City
11. Bronson
12. Burlingame
13. Caldwell
14. Chapman
15. Cheney
16. Cherryvale
17. Clay Center
18. Clearwater
19. Clifton
20. Columbus
21. Colwich
22. Concordia
23. Conway Springs
24. Dodge City
25. Douglass
26. Edgerton
27. Edna
28. Edwardsville
29. Ellis
30. Erie
31. Eudora
32. Eureka
33. Fairway
34. Florence
35. Ford
36. Galena
37. Garden Plain
38. Garnett
39. Goessel
40. Grandview Plaza
41. Gypsum
42. Halstead
43. Hays
44. Haysville
45. Herington
46. Hesston
47. Hiawatha
48. Hoisington
49. Holcomb
50. Horton
51. Hutchinson
52. Ingalls
53. Iola
54. Johnson
55. Junction City
56. Kansas City
57. Kingman
58. La Cygne
59. Lakin
60. Lansing
61. Lenexa
62. Leoti
63. Lincoln Center
64. Linsborg
65. Long Island
66. Louisburg
67. Lyndon
68. Madison
69. Maize
70. Manhattan
71. Marysville
72. Merriam
73. Minneola
74. Minneapolis
75. Mission Hills
76. Mound City
77. Mound Valley
78. Moundridge
79. Mount Hope
80. Neodesha
81. Newton
82. Norton
83. Oakley
84. Oberlin
85. Offerle
86. Olathe
87. Olpe
88. Osage City
89. Osawatomie
90. Overbrook
91. Parsons
92. Phillipsburg
93. Plainville
94. Pleasanton
95. Prairie Village
96. Roeland Park
97. Rossville
98. Russell
99. Saint George
100. Saint John
101. Saint Marys
102. Salina
103. Scott City
104. Scranton
105. Sedan
106. Sedgwick
107. Sharon
108. Shawnee
109. South Hutchinson
110. Spring Hill
111. Stafford
112. Stockton
113. Topeka
114. Uniontown
115. Valley Center
116. Wakeeny
117. Wakefield
118. Wamego
119. Waterville
120. Wellington
121. Winchester
122. Winona



WHY DOES CBK PERFORM BETTER THAN COMPETITORS?

The advantage CBK brings to its' clients are the combination of an in-house legal team within the Agency. This allows CBK's clients to benefit from both agency and legal collections all within a single environment. In today's world, fighting off a pandemic and dealing with all things surrounding that, how much time is left to handle important business? Knowing and understanding the REVENUE CYCLE of collections must include as many resources as possible to provide maximum recoveries. CBK is equipped to any and all of your collection needs. CBK provides the following advantages over other agencies:

- Database
- Professionalism
- Agency/Legal
- Experience
- Willingness to help our Clients

In reading the following and understanding how CBK can really assist you with all of your collection needs, keep one thing in mind. CBK only gets paid when you get paid, you will never pay CBK any collection fees, until CBK has paid you money for collecting your accounts. No up-front costs or hidden fees, you turn your accounts and we will collect your money...simple as that. So, if someone owes you money for anything (services rendered, or items purchased or anything) think of CBK and turn those accounts and let us help your bottom line!

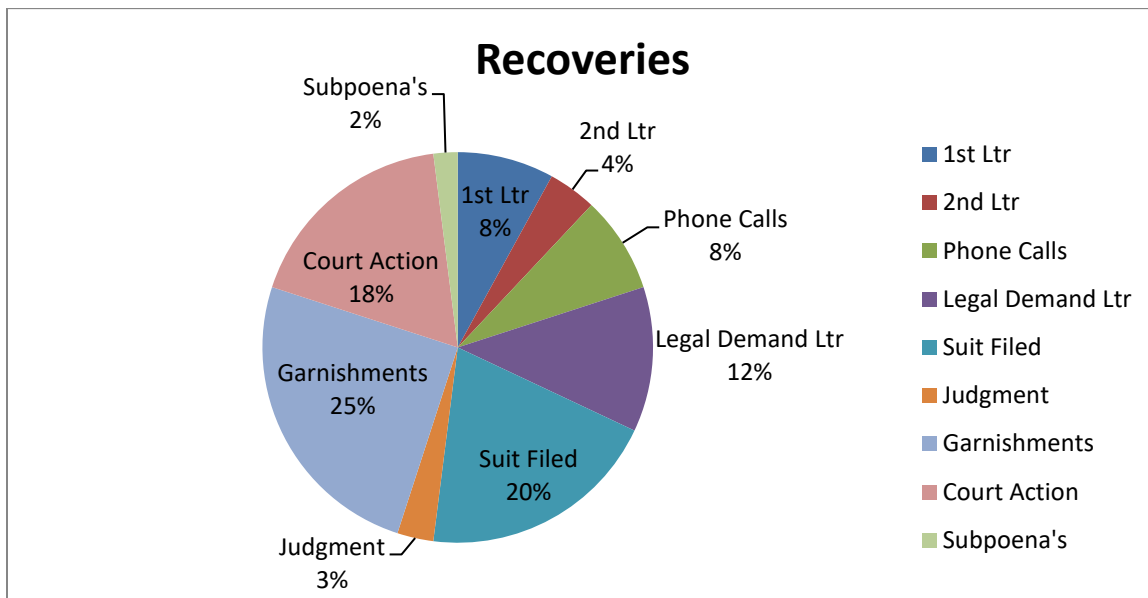
DATABASE: CBK specializes in all types of collection within Kansas and Missouri and provide higher recovery percentages for their clients. CBK markets in Kansas and Missouri, as it best benefits our client base. This practice strengthens the database and allows CBK to reach out to people more effectively within the collection arena. Our client database is concentrated in Kansas and Missouri allowing CBK to specialize collections specifically in these areas. If you can find them, then you have a good chance to collect the debt from them. We have one of the largest databases among our competitors. This is really why you want us. Currently, CBK collects a variety of debt types that include:

1. Government
2. Accounts Receivables
3. Bad Checks
4. Contracts
5. Utility
6. Healthcare/Medical
7. Subrogation

PROFESSIONALISM: CBK prides itself on its professional handling of cases to ensure the positive public image of its clients. CBK keeps quality assurance, compliance and management teams that continuously monitor CALL RECORDINGS. All calls are recorded and easily obtainable if a conversation between an account representative and a debtor is ever questioned. In an attempt to better serve our clients, CBK utilizes a third-party vendor to assist in analyzing every call for quality assurance reasons.

EXPERIENCE: CBK employs a seasoned management team that is directly involved in all operations. H&M has years of experience in Collection law and is an active practicing attorney. Senior management has an average of 25 years' experience with the company, and junior associates and supervisors have an average term of service with the company of 10+ years.

AGENCY / LEGAL: CBK's strength is its combined agency and legal resources that more effectively and efficiently handle accounts in the most time-sensitive manner. Unlike stand-alone agencies with out of state attorney's, CBK does not avoid legal processing when all other efforts have been exhausted. Alternatively, unlike a stand-alone law office, CBK offers the legal arm the technologies available that are generally employed only by agencies (i.e. dialers, state of the art collection management system, fully qualified collections department, predictive analytics and scoring). Furthermore, the legal department does not just depend solely on legal action, but a combination of legal action, letter series, and telephone techniques, combined with the legal capabilities to execute on judgments and turn them into revenue for our clients. This architecture must exist to complete the total revenue cycle, i.e. Agency and Legal all in one. Further, a very important aspect is legal action preserves the statute of limitations perpetually. We have collected bills that have been 10 years and older, agencies cannot do that. To graphically explain what we are talking about, we have depicted a pie chart as to what an agency does and a pie chart as to what the combination of legal and agency generate. The difference is astounding. Agencies cannot compete in this environment.



15 million in annual listings. We pride ourselves in collecting as much as we can as fast as we can for our clients and feel these are a few more reason why CBK stands above others. Our office has excelled at collecting for many Clients in Kansas on all types of debts and feel what sets us apart from those large national agencies are things like:

1. CBK knows the community, represents other clients in the same communities and can find people easier and faster. Debtors speak with people in Kansas, about their Kansas debts.
2. CBK's in-house legal team makes legal action a seamless transition when required.
3. CBK provides extra services at no cost to our clients, such as: Credit report monitoring, to ascertain a debtor's ability to pay, to see when they are making large purchases, getting new credit cards, or paying off other loans/debts. In many cases, we issue subpoenas to credit granters to find pertinent information for those debtors that are adept at evading their obligations, or filing proofs of claim when debtors file bankruptcy on behalf of our clients.

4. Familiarity with all Kansas courts enables ease of use in the legal system, allowing us to fully utilize all different types of collection methods to maximize collections.
5. Lastly, CBK prides itself in making sure each and every Client is not just a number in our database. On boarding new Clients, means new expenses and new tasking. The CBK Client Training Portal provides the ability to receive training on demand along with a proprietary application to make the data entry as easy as possible.

CBK is unique in that being a Kansas/Missouri operated company; we cater specifically to the Kansas/Missouri demographic. CBK utilizes one system for all cases, in agency and legal. Client representatives can give immediate real time information on all cases, no matter the status. Even legal payments are posted just once in CBK's system so there is no delay in remitting and transmitting that information back to the client. This is impossible for Agencies that employ third party legal counsel and must wait to receive that information and funds back.

CBK offers a complete Collection Solution to all clients and can tailor one to fit your needs. With experience in Hospital collections dating back to 1982 and bad check collections dating back to 1993, we fully understand the needs of our clients and potential clients.

- ❖ Collect as much as we can as fast as we can.
- ❖ Treat those we are collecting from in a manner that insures their continued patronage of our client.
- ❖ And always look for better ways to perform for our clients.

We can tailor a program that fits your needs, with as many notices as you would like us to send and make as many phone attempts as you wish and as the laws allow. Our end game is your end game, bring as much resolution to your accounts as we can. Should you wish more information, we would be happy to share a more detailed version of how we handle accounts within our offices.

Staff Report



To: Honorable Mayor and City Council

From: Matt Stiles, City Administrator

Date: 9/21/2021

Re: 2023 Brush Truck Bids

Background: The next piece of equipment on the HFD equipment schedule for replacement is a brush truck unit. A department taskforce put together specs for replacement brush truck. The replacement is actually a heavy brush truck unit with a 1,500 gallon tank. The larger truck is more versatile, offering 50% more water and the ability to navigate grass fire areas better than the current truck.

The taskforce developed specs and requested sealed bids from truck providers. We received four sealed bids:

- Weis Fire: \$279,271.00
- Hays Fire and Rescue: \$242,562.72
- Watts Manufacturing: \$250,340.00
- Unruh Fire: \$301,870.21

Bids were reviewed by the taskforce to ensure the specs were met. After that it was confirmed that the bid submitted by Hays Fire and Rescue did meet the specs and was the lowest bid. Lead time for the vehicle is over 15 months out, meaning we can expect delivery in early 2023.

Financial Impact: The City and our township partners contribute annually to a fire equipment replacement fund. The amount of those contributions is based on the assessed valuation of the governmental unit, with Hillsboro paying the largest portion. The current fund has \$103,613.02 available. Each additional year roughly there is roughly \$55,000 contributed to the replacement fund. In this scenario, there would be a 50% down payment with the remainder placed on a short term note with a local bank.

Recommendation: Approve the bid from Hays Fire and Rescue at \$242,562.72.



INTRODUCING THE PRAIRIEWOLF

FEATURING ROSENBAUER H5 FIRE PUMP
PTO - HIGH PRESSURE PUMP

**HAYS
FIRE**
and **RESCUE**
Sales & Service

Phone: 1-785-628-0600

Apparatus Body

- All aluminum rubber torsion mounted body
- Rosenbauer H5 PTO (132 GPM @ 600 psi)
- Pump-n-roll
- 1500 Poly tank
- Top-mount controls - for stationary pumping @150psi
Includes: 100' Booster reel, 2-1" Whiplines, 1-1½" discharge
- TFT Tornado front bumper monitor - joystick control from inside cab
- Custom replacement front bumper (monitor mount & LED recessed light bars)
- 1-1½" Driver side sweep nozzle - with Akron electric nozzle controlled from inside the cab
- LED scene lights
- 2½" Rear direct fill
- Code 3 LED light package - lightbar and perimeter warning lights
- 10" Rear Newton manual dump valve
- Rear, center between the body frame rail storage
- Two (2) side under-body compartments
- Line-X coated and aluminum treadplate body finish
- Side reflective stripe (cab & body channel)
- Rear chevron reflective sheeting

CHASSIS

- New chassis with super single wheels and tires
- Customer supplied used chassis (subject to approval)





Hays Fire & Rescue Sales & Service, LLC

1151 Moe Road Hays, Kansas 67601
1-785-628-0600 Phone 1-785-628-0610 Fax

1-800-269-4093 Kansas

haysfire@ruraltel.net

Fire Apparatus Contract

Date: September 8, 2021
For: Hillsboro Fire Department
Hillsboro, KS

We hereby propose and agree to furnish, after your acceptance and the proper execution by Hillsboro Fire Department (HFD) and an officer of Hays Fire & Rescue Sales & Service, LLC. (HFR) the following apparatus and equipment.

One (1) PrairieWolf Fire Brush Truck Unit Body mounted on a New International HV507 Cab & Chassis, subject to all causes beyond our control, for the sum of:

1 – Prairie Wolf Fire Brush Unit Body per specifications \$242,562.72

- Delivery is to be made to the Hillsboro Fire Department, Hillsboro, KS
- HFD is to provide a tax exemption certificate with HFR's copy of the executed contract.
- HFD is to qualify for a government fleet concession and have a current fleet number on file with such.
- Upon receipt of the Cab & Chassis by HFR at their factory, in Hays, KS, HFD is to be invoiced by HFR in the amount of \$115,655.00 and is to pay for the chassis at that time. Balance is then to be paid upon completion and delivery to HFD.
- Completed Fire apparatus shall be delivered to HFD **no more than 120 days after** the receipt of chassis at HFR.


Federal, State and Local taxes are not included.

Please date, execute and return (1) one copy of the Apparatus Contract to us at the above address.

Witness or hands and official seal this _____ day of _____ 2021.

Respectfully submitted,

Hays Fire and Rescue Sales & Service, LLC.



Kelvin Meyers, President

by _____
Hillsboro Fire Department
Hillsboro, KS

Print Name & Title

OPTIONS

OPTION 1: LINEX COATED BODY; The apparatus body shall be finished in a Red LineX and aluminum Treadbrite finish. **ADD: \$4,500.00** YES: _____ NO: _____



Hays Fire and Rescue Sales & Service, LLC.

1151 Moe Road Hays, Kansas 67601
1-785-628-0600 Phone 1-785-628-0610 Fax
1-800-269-4093 Kansas & Missouri

SPECIFICATIONS 1500 GALLON TOPMOUNT PRAIRIEWOLF BRUSH TRUCK HILLSBORO FIRE DEPARTMENT (HFD)

Date: September 8, 2021

CHASSIS: The chassis to be a New International HV507 4x4 (See attached Chassis Specifications)

CUSTOM FRONT BUMPER: There shall be a custom replacement bumper extending no more than 24" from original bumper location, with a permanent winch mount, monitor mount and ground sweep provisions installed on the front of the chassis. The bumper is to have two (2) forward facing LED light bars recessed into the bumper, one (1) each side. There shall be two (2) recovery tow hooks mounted to the chassis frame below the bumper. The bumper shall be coated in a black LineX finish

HEAVY DUTY BRUSH GUARD: There shall be a heavy duty brush guard built onto the front bumper to provide protection to the front of the apparatus but not to impede the operation of any nozzles or opening of the hood. Note – the brush guard is intended to provide protection to the chassis, it is not designed or intended to carry personnel. The brush guard shall be coated in a black LineX finish

SKID PLATES: There shall be skid plates on the underside of the chassis to provide protection for the front axle, transmission and transfer case as well as fuel tank and battery box. Skid plates shall have openings to allow for cleanout but not adversely affect strength or protection.

REAR RECEIVER HITCH: There shall be a rear receiver hitch provided and installed on the rear of the chassis.

MASTER DISCONNECT: There shall be one (1) master disconnect switch, manually operated and located just inside the driver's door of the chassis. It shall be for the apparatus body and fire unit only.

CONSOLE IN CAB: There shall be a console in the chassis cab for mounting siren control, emergency light switches, auxiliary pump control panel, dump valve switch, ground sweep switches, monitor joystick control, mini level gauge, and radio unit. (Department to supply radio and antennas)

INTERCOM SYSTEM: There shall be a three position wireless FireCom UHW505 under the Helmet DECT7 wireless Headset Communication System. The system shall be capable of PTT.

BACKUP CAMERA: There shall be a backup camera mounted to the rear of the apparatus as near to the centerline of the vehicle as possible. The monitor for the camera should be mounted in the cab in a way that does not obstruct driver vision.

THERMAL CAMERA: There shall be a HyperSight HS-160R kit thermal imaging camera mounted atop the cab that will also utilize the backup camera monitor.

BATTERY MAINTAINER: There shall be a Kussmaul battery maintainer/air pump system installed. It shall be an Auto Charge 1200, AC Auto Pump with drain and Super Auto Eject with yellow cover. Location to be determined at prebuild.

APPARATUS BODY: There shall be one complete all aluminum Flatbed Uni-body to fit a single rear axle International cab and chassis. The body will be 100" wide and 168" long. The complete unit must be one piece module constructed and built separately from chassis. The framing process shall consist of all 3" aluminum channel welded to 6" aluminum channel rails. The outer perimeter of the body shall be constructed from 4" aluminum channel with the open side of the channel facing the outer sides and rear of the apparatus body, creating a recessed area to protect lighting and reflective stripping. This frame work shall then be attached to the frame of the chassis. The aluminum frame work shall be attached with rubber torsion mounts to the steel chassis frame. The frame work will be covered with diamond treadbrite. All corners and seams will be welded solid, ground down smooth. The rear of the apparatus body shall have a tailboard projecting downward with both ends sweeping upward. There must be enough room on both the right and left ends to mount combination stop/tail/turn and back up lights. These lights must be mounted on a recessed position to prevent damage. A cluster of (3) three ICC marker lights are to be recessed in the bottom center section. The body finish is to be a brushed natural aluminum finish.

WALKWAY: There will be a 24" wide walkway directly behind the chassis cab and in front of the tank. It will be part of the body and have a clear path from left to right, the full width of the body. There will be a recessed 33" Manbasket/stepwell on each end large enough to stand in or give easy access to the walkway. Each entrance must have a gate attached. There will be a complete heat shield in front of the walk way extending to both outer ends of the body. This will be as tall as the bottom of the rear window of the cab. There is to be a headache rack extended above the heat shield. The walkway and headache rack is to be made from 2" round aluminum tubing and finished in a brushed natural aluminum finish

REAR ACCESS COMPARTMENT: There shall be (1) one Rear Access storage compartment between the body rails, extending from the front of the body to the rear of the body. The compartment is to have a rear access, fold down door with finger latch.

REAR COMPARTMENT SLIDE OUT TRAY: A slide-out tray shall be installed in the rear accesses between-the-frame-rail compartment. It is to be constructed from polypropylene and be accessible from the rear through the dropdown compartment door.

UNDERBODY COMPARTMENTS: There shall be two (2) underbody side storage compartments, one (1) each side. Each compartment shall have an adjustable shelf that is the full width and depth. The compartments should be mounted rear of the walkway as far forward as possible. They shall be equal sized of 36" wide (front to rear of apparatus), 24" tall and no less than 20" deep (make as deep as possible). The doors shall be hinged on the front and be held open with a gas shock and slam style latch. Each compartment shall have LED lighting that is activated when the door is open

PULL OUT STEP: A ZICO pullout step is to be installed on the rear. The step shall be 11" wide x 5" deep with an 8" drop. It shall have a 500 lb. static load with non-skid stepping surface.

TANK CONSTRUCTION: There shall be a Poly Booster Tank with a capacity of 1500 gallons of water and 20 gallons of foam. It is to be constructed of ½" and ¾" thick polypropylene sheet stock. The material shall be of high quality, non-corrosive, stress relieved thermoplastic, black in color, and UV stabilized for maximum protection.

The booster tank shall be of a standard configuration and shall be so designed to have complete modular capability. All joints and seams are to be fully welded for maximum strength. The unit shall incorporate transverse partitions manufactured of polypropylene which shall interlock with a series of longitudinal partitions constructed of polypropylene. All swash partitions shall be so designed to allow for maximum water and air flow between compartments. The rear wall of the tank shall have a standard built-in sight gauge.

The tank shall be equipped with a combination vent/overflow and manual fill tower. The fill tower shall be constructed of polypropylene and shall have a removable polypropylene screen. Inside of the fill tower approximately 4" down from the top shall be a combination vent/overflow pipe.

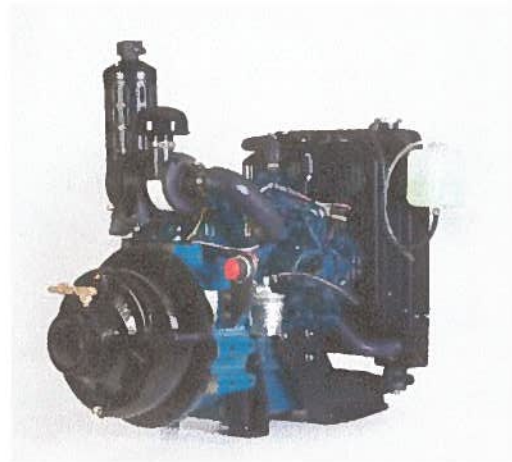
The tank shall have a suction of the internal draw type. There shall be three (3) tank outlets. One (1) tank to pump suction fitting, one (1) direct fill fitting, and one (1) tank re-fill fitting.

The tank shall have provisions on the tank for mounting both front and rear and utilize the complete width of the apparatus body.

NEWTON DUMP VALVE: There shall be one (1) electric 10" Dump Valve installed. The valve is to be an A.H. Stock Co. Newton Kwik-Dump, electric 10" valve. It is to be installed on the driver side with a flip out chute. There shall be two control switches (1) one in the chassis center console and one (1) accessible from near the dump chute.

TANK DIRECT FILL: There shall be a 2½" rear direct tank fill. It shall have a 2½" Akron valve with a 2½" Female NST swivel, 2½" 30 degree apparatus elbow and chrome plug.

PUMP: There shall be a Hale HPX200-KBD24, 24hp Kubota Diesel powered pump installed with 12 volt electric primer in place of the HPX200-B18 pump. The pump fuel shall be supplied from the chassis fuel tank.



Features:

- Kubota Flows ranging from 100 GPM @ 150 PSI to 250 GPM @ 50 PSI Super Mini Series D902 24.8-HP 4-cycle diesel engine EPA Tier 4 emissions compliant
- Electric start
- Anodized aluminum alloy pump head and body
- Pump head and body coupled together with stainless steel band clamp for easy serviceability
- Bronze impeller and renewable wear rings
- Self-adjusting mechanical seal
- 12V ESP primer
- 3.0" NPT / 4.0" Victaulic suction connection; 2.5" NPT discharge

MAIN PUMP PANEL: There shall be (1) one Top-Mount control pump panel located at the front of the body in the walkway. The top-mount panel controls consisting of pump engine electric start button, throttle and choke control, pump panel light, pressure gauge, water level gauge, and foam unit control. The valves to control the discharges from the header will be mounted at the panel in a Top-Mount control configuration. The panel is to be constructed from Poly material and integrated into the tank. The panel shall be hinged on top for access to the header and have an aluminum treadbrite front access panel with finger latches for access from the walkway.

CAB PUMP PANEL: There shall be pump controls for the diesel engine, and pump installed in the chassis center console it shall have start, stop and throttle functions with a pressure gauge.

TANK WATER LEVEL: There shall be one (1) Class 1, four-light, tank water level gauge mounted on the Main pump panel in the walkway.

MINI WATER LEVEL GAUGE IN CAB: There shall be a Class1, mini water level gauge installed in the cab center console.

PLUMBING SUCTION: The tank to pump line shall be 2 1/2" with an Akron full flow 1/4 turn 2 1/2" valve with chrome handle between the pump and tank. There shall be a 2 1/2" Akron suction valve with a 2 1/2" NST female chrome swivel and plug plumbed off of the suction side of the pump for a direct flow into the pump for drafting or hydrant use. All suction plumbing to be rigid 2 1/2" pipe.

DISCHARGE MANIFOLD: There shall be a 3" x 3" rigid top mount manifold directly off the discharge side of the pump plumbed to the front crosswalk top mount control panel. There shall be nipples and discharge valves with chrome handle flanges on the top side of the manifold.

These will be used for:

- (2) two 1" crosswalk whiplines with 90 degree swivel joints and 1" NST M adapters
- (1) one 1" booster reel line
- (1) one 1" tank refill line

There shall be foam to all discharges.

All above to have 1/4 turn Akron full flow valves with chrome handles to meet or exceed the size of the intended lines.

WHIPLINE HOSE: There shall be two (2) 1"x 8' Booster hose whiplines. The whiplines shall be accessible while standing in the Stepwell areas.

BOOSTER REEL: There shall be (1) one Hannay EF24-23-24 12volt electric rewind Booster hose reel painted red. Reel capacity shall be 150' x 1" booster hose. There shall be a single chrome hose roller assembly. There shall be (1) one electric rewind switch. The inlet shall be 1" female NPT 90 degree swivel joint. Horizontal rewind mechanism is standard. The booster reel shall be mounted on the rear of the apparatus body on the passenger side.

BOOSTER HOSE: There shall be 150' of 1" booster hose - 800 lb. test.

NOZZLES: There shall be three (3) Crestar nozzles provided, three SF40, 1" select gallonage nozzles (5-10-24-40 GPM) nozzles for the booster reel and whiplines. Three (3) Zephyr nozzle holders are to be provided, one for the booster reel nozzle and two for the whipline nozzles.

DRIVER SIDE GROUND SWEEP ELECTRIC NOZZLE / 1 1/2" DISCHARGE: There is to be a Driver Side 1 1/2" Stepwell Discharge with an electric valve/electric nozzle controlled from the chassis cab; there is to be one (1) Akron 3293, 1 1/2" NST electric nozzle (adjustable gpm) with electric control from a switch in the chassis cab for fog/stream functions.

The electric valve to be a 12 volt, 1 1/2" electric valve, switch controlled from the chassis cab.

The side Sweep Discharge nozzle may be removed, leaving Male a 1 1/2" NST hand line discharge connection.

FRONT MOUNT MONITOR: There shall be one Task Force Tips Tornado front mount monitor with a 2" electric control valve, 15-120 Selectable GPM and adjustable fog/stream pattern mounted on the front bumper. The monitor shall be controlled by a joystick control from the chassis cab console. There shall be an automatic drain valve installed in the supply line to the front of the vehicle.

FOAM SYSTEM: There shall be a FoamPro 1601, Class A foam system installed. The foam proportioning control module shall be mounted at the rear pump panel. There shall be two (2) remote on/off switches installed. One (1) in the chassis center console, and one (1) in the walkway control panel. The Foam system shall be set up that when the recirculation valve is opened foam can't get in the water tank.

EMERGENCY SIGNAL AND LIGHTING EQUIPMENT: There shall be Whelen 295 Series siren controller with radio repeat and mic. One (1) howler low tone speaker installed. There shall be (1) one 100 Whelen SA315P Siren Speaker mounted in the chassis front bumper area. There shall be (1) one Whelen LED 56" Justice NFPA (red/blue) light bar mounted on the chassis cab as far forward as possible. There shall be six (6) RED Whelen M7 LED perimeter lights with chrome bezel and four (4) Blue Whelen M7 LED perimeter lights with chrome bezel.

- (1) Red front facing LED mounted on the front driver side of the bumper
- (1) Blue front facing LED mounted on the front passenger side of the bumper.
- (2) Red side facing LED mounted (1) on each side of the bumper
- (2) Blue Side facing LED installed in the body channel directly behind the walkway facing outwards.
- (2) Red side facing LED Installed in the body channel at the rear of the body facing outwards.
- (1) Red Rear facing LED installed in the body channel on the driver side.
- (1) Blue Rear facing LED installed in the body channel on the passenger side.

There shall be two (2) Tomar Scorpion beacons installed at the rear of the tank atop the light stanchions. (1) Red on the driver side, and one (1) amber on the passenger side.

There shall be four (6) ground lights installed. Two (2) for the cab one (1) at each cab entrance, two for the walkway entrances (1) at each entrance, and two (2) at the rear of the apparatus one (1) each side. Ground lights shall be activated when chassis parking break is applied.

There shall be (4) recessed walkway lights installed in the heatshield for walkway platform lighting. Walkway lights shall be activated when chassis parking break is applied.

There shall be four (4) SuperBrightLED 30" Combo Spot/Flood LED lights. One (1) mounted on the front brush guard, (3) mounted on top of the tank (1) on the Driver side, one (1) on the passenger side, and one (1) on the rear.

There shall be switch controls in the console of the chassis for emergency lighting and scene lighting control. All wiring to be protected with automotive type loom with temperature rating of -30 degrees to +300 degrees. Grommets shall be used when wiring through body. There shall be an LED combination stop/tail/turn light and LED backup light mounted on each side on the rear.

BODY FINISH, LETTERING AND STRIPING: The body shall be a natural brushed aluminum and aluminum treadbrite finish. The body will be undercoated to provide maximum corrosion protection. Driver and passenger cab doors shall have fire department logo and name, and apparatus identification number on sides of hood and roof of cab.

A White reflective stripe shall be installed on the sides of the chassis cab and on the right and left sides and rear of the apparatus body, in the recessed channel area of the body. There will be Red/Yellow Chevron reflective striping on the rear tailboard.

WARRANTY:

- The Body has a 10 year structural warranty
- The Tank has a lifetime warranty
- The pump has a 3 year warranty

OPTIONS

OPTION 1: LINEX COATED BODY; The apparatus body shall be finished in a Red LineX and aluminum Treadbrite finish. **ADD: \$4,500.00** YES: _____ NO: _____



Prepared For:
Hays Fire Equipment
Kelly Meyers
127 E. 8th St.
Hays, KS 67601-
(785)628 - 0600
Reference ID: N/A

Presented By:
ROBERTS TRUCK CENTER-SAL
Adam S Hlad
1944 NORTH 9TH STREET
SALINA KS 67401 -
(785)827-0336

Thank you for the opportunity to provide you with the following quotation on a new International truck. I am sure the following detailed specification will meet your operational requirements, and I look forward to serving your business needs.

Model Profile
2023 HV507 SFA (HV507)

AXLE CONFIG:	4X4
APPLICATION:	Tank (Emergency)
MISSION:	Requested GVWR: 35000. Calc. GVWR: 38800. Calc. GCWR: 80000 Calc. Start / Grade Ability: 39.53% / 4.51% @ 55 MPH Calc. Geared Speed: 71.1 MPH
DIMENSION:	Wheelbase: 195.00, CA: 120.00, Axle to Frame: 75.00
ENGINE, DIESEL:	{Cummins L9 380} EPA 2021, 380HP @ 2100 RPM, 1150 lb-ft Torque @ 1200 RPM, 2200 RPM Governed Speed, 380 Peak HP (Max), (RATED FOR EMERGENCY VEHICLES ONLY)
TRANSMISSION, AUTOMATIC:	{Allison 3000 EVS} 5th Generation Controls, Close Ratio, 6-Speed with Double Overdrive, with PTO Provision, Less Retarder, Includes Oil Level Sensor
CLUTCH:	Omit Item (Clutch & Control)
AXLE, FRONT DRIVING:	{Meritor MX-16-120} Single Reduction, 16,000-lb Capacity, with Hub Piloted Wheel Mounting
AXLE, REAR, SINGLE:	{Dana Spicer S23-190D} Single Reduction, Hypoid Gearing, 23,000-lb Capacity, Driver Control Locking Differential, R Wheel Ends Gear Ratio: 6.14
CAB:	Conventional, Day Cab
TIRE, FRONT:	(2) 425/65R22.5 Load Range L XZY-3 (MICHELIN), 465 rev/mile, 65 MPH, All-Position
TIRE, REAR:	(2) 425/65R22.5 Load Range L XZY-3 (MICHELIN), 465 rev/mile, 65 MPH, All-Position
SUSPENSION, REAR, SINGLE:	31,000-lb Capacity, Vari-Rate Springs, with 4500-lb Capacity Auxiliary Multileaf Springs
PAINT:	Cab schematic 100WK Location 1: 2303, Red (Std) Chassis schematic N/A

Description

Base Chassis, Model HV507 SFA with 195.00 Wheelbase, 120.00 CA, and 75.00 Axle to Frame.

TOW HOOK, FRONT (2) Frame Mounted

AXLE CONFIGURATION {Navistar} 4x4

Notes

: Pricing may change if axle configuration is changed.

FRAME RAILS Heat Treated Alloy Steel (120,000 PSI Yield); 10.866" x 3.622" x 0.437" (276.0mm x 92.0mm x 11.1mm); 456.0" (11582mm) Maximum OAL

BUMPER, FRONT Swept Back, Steel, Heavy Duty

FRAME, SPECIAL EFFECTS Dimple on Left and Right Top Flange of Frame Rail to Reference Rear Axle Centerline

FRAME EXTENSION, FRONT Integral; 20" In Front of Grille

WHEELBASE RANGE 181" (460cm) Through and Including 205" (520cm)

AXLE, FRONT DRIVING {Meritor MX-16-120} Single Reduction, 16,000-lb Capacity, with Hub Piloted Wheel Mounting

Notes

: Axle Lead Time is 90 Days

AXLE, FRONT DRIVING, LUBE {EmGard FE-75W-90} Synthetic Oil; 1 thru 29.99 Pints

SUSPENSION, FRONT, SPRING Parabolic Taper Leaf, Shackle Type, 16,000-lb Capacity, with Shock Absorbers

BRAKE SYSTEM, AIR Dual System for Straight Truck Applications

Includes

: BRAKE LINES Color and Size Coded Nylon

: DRAIN VALVE Twist-Type

: GAUGE, AIR PRESSURE (2) Air 1 and Air 2 Gauges; Located in Instrument Cluster

: PARKING BRAKE CONTROL Yellow Knob, Located on Instrument Panel

: PARKING BRAKE VALVE For Truck

: QUICK RELEASE VALVE On Rear Axle for Spring Brake Release: 1 for 4x2, 2 for 6x4

: SPRING BRAKE MODULATOR VALVE R-7 for 4x2, SR-7 with relay valve for 6x4/8x6

DRAIN VALVE {Berg} with Pull Chain, for Air Tank

AIR BRAKE ABS {Bendix AntiLock Brake System} 4-Channel (4 Sensor/4 Modulator) Electronic Stability Program, with Automatic Traction Control

AIR DRYER {Bendix AD-IP} with Heater

BRAKE CHAMBERS, FRONT AXLE {MGM} 24 SqIn

BRAKE CHAMBERS, REAR AXLE {Bendix EverSure} 30/30 SqIn Spring Brake

SLACK ADJUSTERS, FRONT {Haldex} Automatic

SLACK ADJUSTERS, REAR {Haldex} Automatic

AIR COMPRESSOR {Cummins} 18.7 CFM

AIR DRYER LOCATION Mounted Inside Left Rail, Behind Transfer Case Mounting

DUST SHIELDS, FRONT BRAKE for Air Cam Brakes

DUST SHIELDS, REAR BRAKE for Air Cam Brakes

AIR TANK LOCATION (2) : One Mounted Under Each Rail, Front of Rear Suspension, Parallel to Rail

BRAKES, REAR {Meritor 16.5X7 Q-PLUS CAST} Air S-Cam Type, Cast Spider, Fabricated Shoe, Double Anchor Pin, Size 16.5" X 7", 23,000-lb Capacity per Axle

Description

BRAKES, FRONT {Meritor 16.5X6 Q-PLUS CAST} Air S-Cam Type, Cast Spider, Fabricated Shoe, Double Anchor Pin, Size 16.5" X 6", 20,000-lb Capacity

STEERING COLUMN Tilting and Telescoping

STEERING WHEEL 4-Spoke; 18" Dia., Black

STEERING GEAR {Sheppard M110} Power

DRIVELINE SYSTEM {Dana Spicer} SPL170 Main Driveline, 1710 Driveline to Transfer Case, SPL140 Driveline to Front Axle, for 4x4

AFTERTREATMENT COVER Steel, Black

EXHAUST SYSTEM Horizontal Aftertreatment System, Frame Mounted Right Side Under Cab, for Single Short Horizontal Tail Pipe, Frame Mounted Right Side Back of Cab, for All-Wheel Drive

ENGINE COMPRESSION BRAKE {Jacobs} for Cummins ISL/L9 Engines; with Selector Switch and On/Off Switch

SWITCH, FOR EXHAUST 3 Position, Momentary, Lighted Momentary, ON/CANCEL, Center Stable, INHIBIT REGEN, Mounted in IP Inhibits Diesel Particulate Filter Regeneration When Switch is Moved to ON While Engine is Running, Resets When Ignition is Turned OFF

ELECTRICAL SYSTEM 12-Volt, Standard Equipment

Includes

: **DATA LINK CONNECTOR** For Vehicle Programming and Diagnostics In Cab

: **HAZARD SWITCH** Push On/Push Off, Located on Instrument Panel to Right of Steering Wheel

: **HEADLIGHT DIMMER SWITCH** Integral with Turn Signal Lever

: **PARKING LIGHT** Integral with Front Turn Signal and Rear Tail Light

: **STARTER SWITCH** Electric, Key Operated

: **STOP, TURN, TAIL & B/U LIGHTS** Dual, Rear, Combination with Reflector

: **TURN SIGNAL SWITCH** Self-Cancelling for Trucks, Manual Cancelling for Tractors, with Lane Change Feature

: **WINDSHIELD WIPER SWITCH** 2-Speed with Wash and Intermittent Feature (5 Pre-Set Delays), Integral with Turn Signal Lever

: **WINDSHIELD WIPERS** Single Motor, Electric, Cowl Mounted

: **WIRING, CHASSIS** Color Coded and Continuously Numbered

HORN, ELECTRIC (2) Disc Style

IGNITION SWITCH Keyless

ALTERNATOR {Leece-Neville AVI160P2003} Brush Type, 12 Volt, 240 Amp Capacity, Pad Mount, with Remote Sense

BODY BUILDER WIRING Back of Day Cab at Left Frame or Under Sleeper, Extended or Crew Cab at Left Frame; Includes Sealed Connectors for Tail/Amber Turn/Marker/ Backup/Accessory Power/Ground and Sealed Connector for Stop/Turn

BATTERY SYSTEM {Fleetrite} Maintenance-Free, (3) 12-Volt 1980CCA Total, Top Threaded Stud

2-WAY RADIO Wiring Effects; Wiring with 20 Amp Fuse Protection, Includes Ignition Wire with 5 Amp Fuse, Wire Ends Heat Shrink and 10' Coil Taped to Base Harness

SPEAKERS (2) 6.5" Dual Cone Mounted in Doors

ANTENNA Shark Fin, Roof Mounted

RADIO AM/FM/WB/Clock/USB Input/Auxiliary Input

BACK-UP ALARM Electric, 102 dBA

DATA RECORDER Includes Display Mounted in Overhead Console

JUMP START STUD Remote Mounted

HORN, AIR Accommodation Package, Less Horn

CLEARANCE/MARKER LIGHTS (5) {Truck Lite} Amber LED Lights, Flush Mounted on Cab or Sunshade

STARTING MOTOR {Delco Remy 38MT Type 300} 12 Volt, Less Thermal Over-Crank Protection

Description

INDICATOR, LOW COOLANT LEVEL with Audible Alarm

INDICATOR, BATTERY WARNING Green BATTERY ON Indicator, Mounted on Left Side of Instrument Panel, To be Used with Factory Installed or Customer Mounted Battery Disconnect Switch

CIRCUIT BREAKERS Manual-Reset (Main Panel) SAE Type III with Trip Indicators, Replaces All Fuses

BATTERY BOX Steel, with Aluminum Cover, 14" Wide, 2-3 Battery Capacity, Mounted Left Side Under Cab

TURN SIGNALS, FRONT Includes LED Side Turn Lights Mounted on Fender

BATTERY DISCONNECT SWITCH for Cab Power Disconnect Switch, Disconnects Power to Power Distribution Center (PDC) and Body Builder Through Solenoid, Does Not Disconnect Charging Circuits, Locks with Padlock, Cab Mounted

SWITCH, AIR HORN, PASSENGER Fire Truck Application; Momentary Switch Located in Instrument Panel Close to Passenger, Driver Also To Activate Switch with Lanyard

USB PORT (1) Located in the Instrument Panel

HEADLIGHTS Halogen

FENDER EXTENSIONS Rubber

LOGOS EXTERIOR Model Badges

LOGOS EXTERIOR, ENGINE Badges

GRILLE Stationary, Chrome

FRONT END Tilting, Fiberglass, with Three Piece Construction, for WorkStar/HV

GRILLE EMBER SCREEN Mounted to Grille and Cowl Tray to Keep Hot Embers out of Engine and HVAC Air Intake System

PAINT SCHEMATIC, PT-1 Single Color, Design 100

Includes

: PAINT SCHEMATIC ID LETTERS "WK"

PAINT TYPE Base Coat/Clear Coat, 1-2 Tone

CLUTCH Omit Item (Clutch & Control)

ANTI-FREEZE Red, Extended Life Coolant; To -40 Degrees F/ -40 Degrees C, Freeze Protection

ENGINE, DIESEL {Cummins L9 380} EPA 2021, 380HP @ 2100 RPM, 1150 lb-ft Torque @ 1200 RPM, 2200 RPM Governed Speed, 380 Peak HP (Max), (RATED FOR EMERGENCY VEHICLES ONLY)

FAN DRIVE {Horton Drivemaster} Two-Speed Type, Direct Drive, with Residual Torque Device for Disengaged Fan Speed

Includes

: FAN Nylon

RADIATOR Aluminum, Cross Flow, Front to Back System, 1228 Ssqln, with 1167 Ssqln Charge Air Cooler, Includes In-Tank Oil Cooler

Includes

: DEAERATION SYSTEM with Surge Tank

: HOSE CLAMPS, RADIATOR HOSES Gates Shrink Band Type; Thermoplastic Coolant Hose Clamps

: RADIATOR HOSES Premium, Rubber

AIR CLEANER Single Element

EMISSION, CALENDAR YEAR {Cummins L9} EPA, OBD and GHG Certified for Calendar Year 2021

THROTTLE, HAND CONTROL Engine Speed Control; Electronic, Stationary, Variable Speed; Mounted on Steering Wheel

FAN OVERRIDE Manual; with Electric Switch on Instrument Panel, (Fan On with Switch On)

CARB IDLE COMPLIANCE Engine Shutdown System Exempt Vehicles, Complies with California Clean Air Regulations

Description

ENGINE CONTROL, REMOTE MOUNTED Provision for; Includes Wiring for Body Builder Installation of PTO Controls and Starter Lockout, with Ignition Switch Control, for Cummins B6.7 and L9 Engines

CARB EMISSION WARR COMPLIANCE Federal, Does Not Comply with CARB Emission Warranty

TRANSMISSION, AUTOMATIC {Allison 3000 EVS} 5th Generation Controls, Close Ratio, 6-Speed with Double Overdrive, with PTO Provision, Less Retarder, Includes Oil Level Sensor

TRANSFER CASE {Meritor MTC-4210} 2-Speed, 10,000 lb-ft Torque Rating, Less PTO Provision, Electric Over Air Control, with Lube Pump

OIL COOLER, AUTO TRANSMISSION {Modine} Water to Oil Type

TRANSFER CASE LUBE {EmGard 50W} Synthetic; 1 thru 14.99 Pints

TRANSMISSION SHIFT CONTROL Column Mounted Stalk Shifter, Not for Use with Allison 1000 & 2000 Series Transmission

OIL COOLER, TRANSFER CASE with Oil Coolant Lines Routed to Oil Cooler

TRANSMISSION OIL Synthetic; 29 thru 42 Pints

ALLISON SPARE INPUT/OUTPUT for Emergency Vehicle Series (EVS), Fire/Pumper, Tank, Aerial/Ladder, Package Number 198

SHIFT CONTROL PARAMETERS {Allison} 3000 or 4000 Series Transmissions, Performance Programming

PTO LOCATION Dual, Customer Intends to Install PTO at Left and/or Right Side of Transmission

AXLE, REAR, SINGLE {Dana Spicer S23-190D} Single Reduction, Hypoid Gearing, 23,000-lb Capacity, Driver Control Locking Differential, R Wheel Ends . Gear Ratio: 6.14

SUSPENSION, REAR, SINGLE 31,000-lb Capacity, Vari-Rate Springs, with 4500-lb Capacity Auxiliary Multileaf Springs

FUEL/WATER SEPARATOR {Racor 400 Series} 12 VDC Electric Heater, Includes Pre-Heater, with Primer Pump, Includes Water-in-Fuel Sensor, Mounted on Engine

FUEL TANK Top Draw, Non-Polished Aluminum, 24" Dia, 50 US Gal (189L), Mounted Left Side, Under Cab

DEF TANK 5 US Gal (19L) Capacity, Frame Mounted Outside Left Rail, Under Cab

AUXILIARY FUEL DRAW TUBE Located at Auxiliary Port on Fuel Tank

CAB Conventional, Day Cab

AIR CONDITIONER with Integral Heater and Defroster

GAUGE CLUSTER Base Level; English with English Electronic Speedometer

Includes

: GAUGE CLUSTER DISPLAY: Base Level (3" Monochromatic Display), Premium Level (5" LCD Color Display); Odometer, Voltmeter, Diagnostic Messages, Gear Indicator, Trip Odometer, Total Engine Hours, Trip Hours, MPG, Distance to Empty/Refill for

: GAUGE CLUSTER Speedometer, Tachometer, Engine Coolant Temp, Fuel Gauge, DEF Gauge, Oil Pressure Gauge, Primary and Secondary Air Pressure

: WARNING SYSTEM Low Fuel, Low DEF, Low Oil Pressure, High Engine Coolant Temp, Low Battery Voltage (Visual and Audible), Low Air Pressure (Primary and Secondary)

SEATBELT WARNING PREWIRE Includes Seat Belt Switches and Seat Sensors for all Belted Positions in the Cab and a Harness Routed to the Center of the Dash for the Aftermarket Installation of the Data Recorder and Seatbelt Indicator Systems, for 1 to 3 Seat Belts

GAUGE, OIL TEMP, AUTO TRANS for Allison Transmission

GAUGE, AIR CLEANER RESTRICTION {Filter-Minder} with Black Bezel, Mounted in Instrument Panel

IP CLUSTER DISPLAY On Board Diagnostics Display of Fault Codes in Gauge Cluster

SEAT, DRIVER {National 2000} NFPA Compliant, Air Suspension, High Back with Integral Headrest, Vinyl, Isolator, 1 Chamber Lumbar, 2 Position Front Cushion Adjust, -3 to +14 Degree Back Angle Adjust

Description

GRAB HANDLE, EXTERIOR (2) Chrome, Towel Bar Type, with Anti-Slip Rubber Inserts, for Cab Entry Mounted Left and Right Side at B-Pillar

SEAT, TWO-MAN PASSENGER {National} Fixed Back, Integrated Headrest in Both Occupant Positions, Vinyl, with Under Seat Storage Compartment

MIRRORS (2) Aero Pedestal, Power Adjust, Heated, Turn Signals, Bright Heads, Black Arms, 6.5" x 14" Flat Glass, Includes 6.5" x 6" Convex Mirrors, for 102" Load Width

Notes

: Mirror Dimensions are Rounded to the Nearest 0.5"

SEAT BELT All Red; 1 to 3

CAB INTERIOR TRIM Classic, for Day Cab

Includes

: CONSOLE, OVERHEAD Molded Plastic with Dual Storage Pockets, Retainer Nets and CB Radio Pocket; Located Above Driver and Passenger

: DOME LIGHT, CAB Door Activated and Push On-Off at Light Lens, Timed Theater Dimming, Integral to Overhead Console, Center Mounted

: SUN VISOR (2) Padded Vinyl; 2 Moveable (Front-to-Side) Primary Visors, Driver Side with Toll Ticket Strap

CAB SOUND INSULATION Includes Dash Insulator and Engine Cover Insulator

WINDOW, POWER (2) and Power Door Locks, Left and Right Doors, Includes Express Down Feature

CAB REAR SUSPENSION Air Bag Type

CAB, INTERIOR TRIM, CLOSEOUT Under IP, Driver Side

INSTRUMENT PANEL Flat Panel

ACCESS, CAB Steel, Driver & Passenger Sides, Two Steps per Door, for use with Day Cab and Extended Cab

WHEELS, FRONT {Accuride 29807} DISC; 22.5x12.25 Rims, Powder Coat Steel, 5-Hand Hole, 10-Stud, 285.75mm BC, Hub-Piloted, Flanged Nut, with Steel Hubs, Offset 5.37"

PAINT IDENTITY, FRONT WHEELS Disc Wheels; with Vendor Applied Black Powder Coat Paint

PAINT IDENTITY, REAR WHEELS Disc Wheels; with Vendor Applied Black Powder Coat Paint

WHEELS, REAR {Accuride 29805} SINGLE DISC; 22.5x12.25 Rims, Powder Coat Steel, 5-Hand Hole, 10-Stud, 285.75mm BC, Hub-Piloted, Flanged Nut, with Steel Hubs

(2) TIRE, FRONT 425/65R22.5 Load Range L XZY-3 (MICHELIN), 465 rev/mile, 65 MPH, All-Position

(2) TIRE, REAR 425/65R22.5 Load Range L XZY-3 (MICHELIN), 465 rev/mile, 65 MPH, All-Position

Services Section:

WARRANTY Standard for HV507, HV50B, HV607 Models, Effective with Vehicles Built July 1, 2017 or Later, CTS-2025A

Stuttertone Emergency Air Horn on hood.

Wheel and tire trade in. New wheel and tires to go on the truck will be 445/65R22.5 Continental HCS at each wheel end. (4 total)

(US DOLLAR)

Description

Price

Net Sales Price:

\$115,655.00

Please feel free to contact me regarding these specifications should your interests or needs change. I am confident you will be pleased with the quality and service of an International vehicle.

Approved by Seller:

Accepted by Purchaser:

Official Title and Date

Firm or Business Name

Authorized Signature

Authorized Signature and Date

This proposal is not binding upon the seller without Seller's Authorized Signature

Official Title and Date

The TOPS FET calculation is an estimate for reference purposes only. The seller or retailer is responsible for calculating and reporting/paying appropriate FET to the IRS.

The limited warranties applicable to the vehicles described herein are Navistar, Inc.'s standard printed warranties which are incorporated herein by reference and to which you have been provided a copy and hereby agree to their terms and conditions.



3949 NW 36th Street
OKC, OK 73112
p: 405-424-2550
f: 405-424-2556

Lifetime Warranty Fire Apparatus Tanks

McClarín Plastics, LLC, herein referred to as the Seller, warrants that tanks manufactured by Seller will be free from defects in materials and workmanship for a period of time equal to the service life of the original vehicle on which tank was installed. Original vehicle must be in active fire suppression for warranty to be in full effect.

Notification should be made to Seller by calling toll free 1-405-424-2550 as soon as defect is discovered so that repair procedure can be carried out quickly. Please include photographs, documentation, serial numbers, contact number and name, and any other pertinent information.

Seller's obligation under this warranty is solely limited to repairing and or replacing, at Seller's discretion, F.O.B. manufacturing plant, tanks manufactured by Seller found to be defective. Seller is not liable for incidental or consequential damage including loss of profit, or any other type of damage which may be caused in whole or part by any failure, defect or other problem of the tanks manufactured by Seller. Alteration made to tanks without approval will void warranty.

This warranty does not apply to tanks damaged by misuse, neglect, accident or improper installation. User will be responsible for cost to repair tank found to be not caused by defect. Reasonable costs to remove and or reinstall defective product must be agreed upon by both parties prior to beginning repair and will be paid by Seller.

Seller makes no other warranties expressed or implied.



Hays Fire and Rescue Sales & Service, LLC.
1151 Moe Road - Hays, KS 67601
785-628-0600

Warranty Policy

Hays Fire and Rescue Sales & Service, LLC. warrants that Hays Fire and Rescue Sales & Service, LLC. or our authorized repair facility will repair, replace, or adjust all parts, except those which are the original chassis manufacturer's responsibility, found to be defective in factory materials or workmanship, made or supplied by Hays Fire and Rescue Sales & Service, LLC., for the period of 12 months.

This warranty is conditional upon normal and reasonable maintenance, and prompt written notice of all defects to Hays Fire and Rescue Sales & Service, LLC. This warranty does not cover defects caused from misuse, negligence, accident, remount (unless by Hays Fire and Rescue Sales & Service, LLC.), or by third parties.

Should repairs become necessary under the terms of this warranty, it shall be performed by Hays Fire and Rescue Sales & Service, LLC. or a facility authorized by Hays Fire and Rescue Sales & Service, LLC. The expense for any transportation to or from such facility shall be that of the purchaser. Furthermore, all warranted parts shall become the property of Hays Fire and Rescue Sales & Service, LLC.



Hays Fire and Rescue Sales & Service, LLC.
1151 Moe Road - Hays, KS 67601
785-628-0600

Ten Year Modular Body Structural Warranty

Subject to provisions, limitation and conditions set forth in this warranty, Hays Fire and Rescue Sales & Service, LLC. (hereby referred to as the "seller"), hereby warrants to each original purchaser only that each new modular body (exclusive of paint and reflective finishes, hardware, moldings, windows, electrical, internal cabinets and other accoutrements and accessories*) is structurally sound and will retain its structural integrity for a period of ten (10) years. This warranty terminates upon transfer of possession or ownership by original purchaser.

This warranty is conditioned upon normal use and reasonable maintenance of such sub frame; prompt written notice of all defects to seller. No repair or additions there to except by seller or authorized by it; said defect not resulting from misuse, negligence, accident, remount, overloading beyond applicable weight rating by customer or third parties. If any of such conditions are not complied with, this warranty shall become void and unenforceable.

Should repairs become necessary under the terms of the warranty, the extent of that repair shall be determined solely by the seller and shall be performed solely at Hays Fire and Rescue Sales & Service, LLC., or a repair facility designated by seller. The expense of any transportation to or from such repair facility shall be that of the purchaser and is not an item covered by this warranty. Seller reserves the unrestricted right at any time and from time to time to make changes in the design of and/or improvements on its products without thereby imposing any obligation on itself to make corresponding changes or improvements in or on its products theretofore manufactured.

EXCLUSIONS AND LIMITATIONS: THIS MANUFACTURER'S WARRANTY IS PROVIDED IN PLACE OF ANY AND ALL OTHER REPRESENTATIONS OR IMPLIED WARRANTIES. NO PERSON IS AUTHORIZED TO MAKE ANY REPRESENTATIONS OR WARRANTY ON BEHALF OF HAYS FIRE AND RESCUE SALES & SERVICE, LLC., OR ANY OF ITS DISTRIBUTORS OTHER THAN SET FORTH IN THIS MANUFACTURER'S WARRANTY. YOUR RIGHT TO SERVICE AND REPLACEMENT OF PARTS ON THE TERMS EXPRESSLY SET FORTH HEREIN ARE YOUR EXCLUSIVE REMEDIES AND NEITHER THE MANUFACTURER NOR ANY OF its DISTRIBUTORS SHALL BE LIABLE FOR DAMAGES, WHETHER ORDINARY, INCIDENTAL OR CONSEQUENTIAL.

*Covered by separate warranty



September 15, 2021
Quote Number: SM-T210143

City of Hillsboro
Todd Helmer
Hillsboro, Kansas

Midwest Electric Transformer Services is pleased to offer the following quotation for your consideration:

Qty: 1) 300 KVA Three Phase Padmount Transformer
Primary Voltage: 12470Y/7200 (95 KV BIL)
Secondary Voltage: 208Y/120 (30 KV BIL)
60 Hz, 65 °C Rise, Standard Impedance
Dead Front, Radial Feed
3) Well and 15 kV Insert HV Bushings
4) 4-Hole Spade LV Bushings
Pressure Relief Valve
Drain Valve and Sampler
Non-PCB Mineral Oil

Price: \$14,370.00 each
Shipment: 12-14 Weeks ARO
Warranty: 3 Years
FOB: Freight Allowed to Kansas
Terms: Net 30 Days with prior approved credit.
~Pricing valid for 15 days

If you have any questions or if you need anything additional regarding this quote, please call me at 785-577-5475.

Thank you,

Reed Hammond – Manager
Midwest Electric Transformer Services
785-577-5475
reed@midwesttransformer.com

Staff Report



To: Honorable Mayor and City Council

From: Matt Stiles, City Administrator

Date: 9/21/2021

Re: League of Kansas Municipalities Voting Delegates

Background: The annual League of Kansas Municipalities meeting is being held at the LKM Conference on Monday, October 11. Based on the City's population, we will receive two votes during the meeting and can select up to two alternate delegates. The governing body must formally approve those delegates to vote on LKM business on the city's behalf. Mayor Thurston, Danielle Bartel and I are attending the conference in Topeka and can serve in that role. I would recommend putting Mayor Thurston and myself as the voting delegates and selecting Danielle Bartel as the alternate.

Financial Impact: NA

Recommendation: Move to select Mayor Lou Thurston and City Administrator Matt Stiles as the voting delegates and City Clerk Danielle Bartel as a voting alternate.

Elcon Services Inc

Invoice

503 Orchard Dr.
Hillsboro Ks. 67063

Date Invoice #

Phone: 620-947-3877

9/8/2021 13120

Bill To

CITY OF HILLSBORO
CLERK
118 E GRAND
HILLSBORO KS 67063

P.O. No. Terms
Net 30

Qty	Description	MPN	Amount	Prev. Invoiced
	Installed Receptacles in Chlorine Room - Non Metallic			
21	1/2" PVC conduit		19.43	
4	1/2" PVC 90		1.82	
6	1/2" PVC coupling		0.95	
4	1/2" PVC male adapter		0.96	
7	3/4 EMT 1 HOLE STRAP		1.53	
3	Gray Flat 1 Gang Vertical or Horizontal Mount Expandible WP In Use Cover		57.54	
3	1/2 SG/WP PVC BOX		23.52	
3	CR20-1 RECEPT		6.65	
1	1/2" PVC TEE		3.64	
15	1/4 X 1 1/4 BLUE CONCRETE SCREW		6.71	
6	TAN & RED WIRE NUTS		1.54	
1	2 1/8" deep 4 sq box (521711234) Steel City		2.16	
1	4" Square Flat Blank Cover Plate		0.55	
30	#12 THHN GREEN		11.95	
30	#12 THHN BLACK		11.21	
30	#12 THHN WHITE		12.03	
6	#12 THHN SOLID BLUE*		0.96	
6	12 THHN SOLID WHITE		1.16	
4	Mileage - 2009 GMC #109		3.00	
6.5	Labor		585.00	
	Thank You!			

Subtotal \$752.31

TOWN WORKED IN **Sales Tax (8.5%)** \$0.00

Hillsboro **Balance Due** \$752.31

All balances over thirty days are subject to a service charge of 1 1/2% per month which is an annual percentage rat of 18%. Minimun service charge of \$.50

City Administrator's Report

September 21, 2021

Arts and Crafts: The return of the annual Arts and Crafts Fair was a success. Everything went as planned with only minor issues with fair goers overheating. There were over 175 vendors this year, down from previous highs but good considering the circumstances COVID-19. Crowds were likewise smaller according to most vendors we spoke with, but still good considering.

KPP Fall Planning Summit: Both Mayor Lou and I attend the annual KPP Fall Planning Summit in Wichita on September 16-18. There were some extremely informative sessions and speakers. There some things that the city could be doing to better position itself for future issues including participating in the GridX exercise this fall. I also presented during the community spotlight program talking about the soon to be adopted strategic plan.

Strategic Plan Document: I will provide printed copies of the strategic plan document and email out a PDF if possible before the meeting. The document is very large because of the graphics and I'm still tinkering with the layout a little. As it stands I'm pleased with the look of the document and I hope that you'll be as well.

Rate Training at KMU: I attended a half day utility rate setting workshop at Kansas Municipal Utilities in McPherson on September 15. There were two in the class including me so I had an opportunity to ask some in-depth questions about water rate setting in the context of our Blue-green algae issues. It was extremely helpful in thinking about how to design the rates to address the increased treatment cost we've been seeing. We will need to talk more about utilities rates before the end of the year.

128 S Main: We have received word that the owner of the building has accepted our offer to purchase the property for \$5,000. The offer has to be approved by the bankruptcy court before it can close. We also have bid for demolition, but it was bid in conjunction with Tabor using the contractor to demolish another building at the same time. The price may have to adjust depending on what Tabor does, but we are seeking some clarity on that.

KPP Bill: Attached is the September KPP bill for month of August. Historically August is one of the more expensive months because electric usage is up during the hotter months. We used 3,265,930 kWh at a cost of \$264,724.10. The February 2021 Storm Surcharge was \$32,659.30.

Health Insurance Savings Report: Attached is the August Health Insurance Savings Report from Freedom Claims Management. The first sheet details how are group is enrolled and those costs. The illustrative rate is what we would have been paying if we would have stayed full insured with BCBS. The second sheet shows the rates paid and the claims paid to date which is still zero since the plan started in July. Overall the city netted a savings of \$16,168.82 which is kept in a bank account to pay future claims. The September report will start to have finalized claims paid equaling less monthly savings. That said early on the plan has performed as promised and we have had very few issues with employees. The biggest one being getting use to the two cards and waiting to pay bills until the secondary insurance has been paid.



PLEASE NOTE NEW
 REMITTANCE ADDRESS
 PLEASE REMIT TO:
 KANSAS POWER POOL
 DEPT 3423
 P.O. BOX 123423
 DALLAS, TX 75312-3423

City of Hillsboro

Attn: City Clerk
 P.O. Box 125
 Hillsboro, KS 67063

Service Month: Aug-21
 Account # 380

Billing Date: 9/13/2021
 Due Date: 9/23/2021

Peak kW	Date	Hour Ending
7,884	8/25/2021	15:00

kW/kWh	Rate	\$ Amount	Ave Cost per kWh
--------	------	-----------	------------------

Demand Charges

Transmission	7,884	kW	\$7.50	\$59,130.00	\$0.01811
Administrative	7,884	kW	\$2.16	\$17,029.44	\$0.00521
RICE Upgrade	7,884	kW	\$0.26	\$2,049.84	\$0.00063
Delivered Capacity	7,884	kW			
Capacity Adjustment	0	kW			
Capacity Demand	7,884	kW	\$10.85	\$85,541.40	\$0.02619

Energy Charges

Metered Energy	3,148,200	kWh			
Losses	117,730	kWh			
Generation	0	kWh			
Unsch Generation	0	kWh			
Energy Adjustment	0	kWh			
Energy	3,265,930	kWh	\$0.02376	\$77,598.50	\$0.02376

Energy Cost Adjustment	3,265,930	kWh	(\$0.00303000)	(\$9,895.77)	(\$0.00303)
FEB 2021 Storm Surcharge	3,265,930	kWh	\$0.01000000	\$32,659.30	\$0.01000

TOTAL DEMAND AND ENERGY CHARGE				\$264,112.71	\$0.08087
Past Due / (Credit)				\$0.00	
Correction for Prior Month Billing				\$0.00	
Distribution Facility Charge				\$611.39	

System average cost of energy in \$/kWh \$0.02073000

TOTAL BILLING THIS PERIOD \$264,724.10

**City of Hillsboro
911280
Monthly Claims Analysis for FreedomChoice
August, 2021**

Employee Tier	# of Employees	Illustrative Rates	Total Illustrative Rates	Umbrella Policy Rates	Total Umbrella Policy Rates	TPA Admin Fee	Monthly Medical Claims Paid	Monthly Rx Claims Paid	Risk Management Fee	Gross Savings of Freedom Choice	Net Savings of Freedom Choice
Single	9	\$ 720.10	\$ 6,480.90	\$ 499.10	\$ 4,491.90	\$ 468.00					
Employee/Spouse	8	\$ 1,440.19	\$ 11,521.52	\$ 998.21	\$ 7,985.68	\$ 416.00					
Employee/Child	3	\$ 1,260.17	\$ 3,780.51	\$ 873.43	\$ 2,620.29	\$ 156.00					
Family	6	\$ 1,800.24	\$ 10,801.44	\$ 1,247.76	\$ 7,486.56	\$ 312.00					
	26		\$ 32,584.37		\$ 22,584.43	\$ 1,352.00	\$ -	\$ -	\$ 864.79	\$ 8,647.94	\$ 7,783.15



FreedomChoice

Group Health Plan

Freedom Claims Management, Inc

P.O. Box 1365

Great Bend, KS 67530

620-792-9151 - Telephone

620-792-3389 - Fax

July, 2021 through June, 2022

**City of Hillsboro
911280
Monthly Claims Analysis for Freedom Choice
July 1, 2021 through June 30, 2022**

	# of Employees	Total Illustrative Rates	Total Umbrella Policy Rates	TPA Admin Fee	Monthly Medical Claims Paid	Monthly Rx Claims Paid	Risk Management Fee	Gross Savings of Freedom Choice	Net Savings of Freedom Choice
July-21	28	\$ 35,104.71	\$ 24,331.29	\$ 1,456.00	\$ -	\$ -	\$ 931.74	\$ 9,317.42	\$ 8,385.68
August-21	26	\$ 32,584.37	\$ 22,584.43	\$ 1,352.00	\$ -	\$ -	\$ 864.79	\$ 8,647.94	\$ 7,783.15
September-21	0	\$ -	\$ -	\$ -	\$ -	\$ -	\$ -	\$ -	\$ -
October-21	0	\$ -	\$ -	\$ -	\$ -	\$ -	\$ -	\$ -	\$ -
November-21	0	\$ -	\$ -	\$ -	\$ -	\$ -	\$ -	\$ -	\$ -
December-21	0	\$ -	\$ -	\$ -	\$ -	\$ -	\$ -	\$ -	\$ -
January-22	0	\$ -	\$ -	\$ -	\$ -	\$ -	\$ -	\$ -	\$ -
February-22	0	\$ -	\$ -	\$ -	\$ -	\$ -	\$ -	\$ -	\$ -
March-22	0	\$ -	\$ -	\$ -	\$ -	\$ -	\$ -	\$ -	\$ -
April-22	0	\$ -	\$ -	\$ -	\$ -	\$ -	\$ -	\$ -	\$ -
May-22	0	\$ -	\$ -	\$ -	\$ -	\$ -	\$ -	\$ -	\$ -
June-22	0	\$ -	\$ -	\$ -	\$ -	\$ -	\$ -	\$ -	\$ -
		\$ 67,689.08	\$ 46,915.72	\$ 2,808.00	\$ -	\$ -	\$ 1,796.54	\$ 17,965.36	\$ 16,168.82



FreedomChoice

Group Health Plan

Freedom Claims Management, Inc

P.O. Box 1365

Great Bend, KS 67530

620-792-9151 - Telephone

620-792-3389 - Fax